



Join the movement

**New fabrics
New colours
New styles**

9

NEW POLOS



MORRIS

6 COLOURS

1317 MENS 2317 LADIES



MANLY

18 COLOURS

1318 MENS 2318 LADIES 3318 KIDS



COTTESLOE

14 COLOURS

1319 MENS 2319 LADIES 3319 KIDS



CURRUMBIN

16 COLOURS

1320 MENS 2320 LADIES 3320 KIDS



PORTSEA

6 COLOURS

1321 MENS 2321 LADIES



DOUBLE BAY

5 COLOURS

1322 MENS 2322 LADIES



KURANDA

7 COLOURS

1323 MENS 2323 LADIES



VAUCLUSE

5 COLOURS

1324 MENS 2324 LADIES



NOOSA

4 COLOURS

1325 MENS 2325 LADIES



NEW
MONASH

INDEX

Whats new

POLOS

1300	Mens Murray Polo	52
1301	Mens Premier Polo	48
1302	Mens Yarra Polo	38
1304	Mens Eureka Polo	50
1305	Mens Paterson Polo	42
1306	Mens Keira Polo	30
1307	Mens Botany Polo	33
1308	Mens Flinders Polo	36
1309	Mens Panorama Polo	45
1310	Mens Endeavour Polo	40
1311	Mens Tasman Polo	46
1312	Mens Hunter Polo	24
1314	Mens Lachlan Polo	26
1315	Mens Claremont Polo	28
1316	Mens Botany L/S Polo	34
1317	Mens Morris Polo	6
1318	Mens Manly Polo	8
1319	Mens Cottesloe Polo	10
1320	Mens Currumbin Polo	12
1321	Mens Portsea Polo	14
1322	Mens Double Bay Polo	16
1323	Mens Kuranda Polo	18
1324	Mens Vaucluse Polo	20
1325	Mens Noosa Polo	22
2300	Ladies Murray Polo	52
2301	Ladies Premier Polo	48
2302	Ladies Yarra Polo	38
2304	Ladies Eureka Polo	50
2305	Ladies Paterson Polo	42
2306	Ladies Keira Polo	31
2307	Ladies Botany Polo	34
2308	Ladies Flinders Polo	36
2309	Ladies Panorama Polo	44
2310	Ladies Endeavour Polo	40
2311	Ladies Tasman Polo	46
2312	Ladies Hunter Polo	24
2314	Ladies Lachlan Polo	26
2315	Ladies Claremont Polo	28
2317	Ladies Morris Polo	7
2318	Ladies Manly Polo	8
2319	Ladies Cottesloe Polo	10
2320	Ladies Currumbin Polo	12
2321	Ladies Portsea Polo	14
2322	Ladies Double Bay Polo	16
2323	Ladies Kuranda Polo	18
2324	Ladies Vaucluse Polo	20
2325	Ladies Noosa Polo	22

3300	Kids Murray Polo	52
3301	Kids Premier Polo	49
3304	Kids Eureka Polo	50
3305	Kids Paterson Polo	42
3307	Kids Botany Polo	33
3309	Kids Panorama Polo	45
3311	Kids Tasman Polo	46
3312	Kids Hunter Polo	24
3316	Kids Botany L/S Polo	34
3318	Kids Manly Polo	9
3319	Kids Cottesloe Polo	10
3320	Kids Currumbin Polo	12

TEES

1204	Mens Eureka Tee	64
1207	Mens Botany Tee	60
1211	Mens Tasman Tee	56
2211	Ladies Tasman Tee	56
3204	Kids Eureka Tee	64
3207	Kids Botany Tee	60
3211	Kids Tasman Tee	56

SINGLET

1101	Mens Premier Singlet	69
1104	Mens Eureka Singlet	66
1107	Mens Botany Singlet	62
1111	Mens Tasman Singlet	58
2101	Ladies Premier Singlet	69
2104	Ladies Eureka Singlet	66
2107	Ladies Botany Singlet	62
2111	Ladies Tasman Singlet	58
3101	Kids Premier Singlet	69
3104	Kids Eureka Singlet	66
3107	Kids Botany Singlet	62
3111	Kids Tasman Singlet	58

TRACKSUIT

1600	Mens Pongee Track Pant	79
1604	Mens Eureka Tracktop	76
1605	Mens Ripstop Track Pant	78
1608	Mens Tapered Fleece Pants	73
1609	Mens Liverpool Jkt	70
1610	Mens Liverpool Pants	72
1611	Mens Tasman Tracktop	74
3600	Kids Pongee Track Pant	79
3604	Kids Eureka Tracktop	76
3605	Kids Ripstop Track Pant	78
3608	Kids Tapered Fleece Pants	73
3609	Kids Liverpool Jacket	70

3610	Kids Liverpool Pants	72
3611	Kids Tasman Tracktop	74

SHORTS

1601	Mens Sport Short	84
1602	Mens Pongee Short	86
1603	Mens Rugby Short	82
1606	Mens Training Short	80
1607	Mens School Zip Short	81
3601	Kids Sport Short	85
3602	Kids Pongee Short	87
3603	Kids Rugby Short	83
3606	Kids Training Short	80
3607	Kids School Zip Short	81

BAGS

4000	Tasman Backpack	91
4001	Tasman Sports Bag	93

HOODIES

1506	Mens Paterson Hoodie	106
1509	Mens Huxley Hoodie	104
1525	Mens Torquay Hoodie	98
1527	Mens Crusader Hoodie	102
1528	Mens Queenscliff Hoodie	100
1530	Mens Monash Hoodie	96
3506	Kids Paterson Hoodie	106
3509	Kids Huxley Hoodie	104
3525	Kids Torquay Hoodie	98
3527	Kids Crusader Hoodie	102
3528	Kids Queenscliff Hoodie	100
3530	Kids Monash Hoodie	96

JACKETS

1512	Mens Selwyn Softshell Jkt	112
1529	Mens Selwyn Softshell Vest	114
1513	Mens Olympus Softshell Jkt	116
1515	Mens Olympus Softshell Vest	118
1516	Mens Sheffield Jacket	124
1517	Mens Kingston Jacket	126
1518	Mens Napier Jacket	128
1519	Mens Parklands Jacket	130
1522	Mens Buller Puffer Jacket	120
1523	Mens Snowy Puffer Vest	122
1524	Mens Buffalo Jacket	132
1531	Mens Aspen Softshell Jkt	110
2512	Ladies Selwyn Softshell Jkt	112
2529	Ladies Selwyn Softshell Vest	115
2513	Ladies Olympus Softshell Jkt	117
2515	Ladies Olympus Softshell Vest	118

2516	Ladies Sheffield Jacket	124
2517	Ladies Kingston Jacket	126
2518	Ladies Napier Jacket	128
2519	Ladies Parklands Jacket	130
2522	Ladies Buller Puffer Jkt	120
2523	Ladies Snowy Puffer Vest	122
2531	Ladies Aspen Softshell Jkt	110
3512	Kids Selwyn Softshell Jkt	113
3529	Kids Selwyn Softshell Vest	115
3513	Kids Olympus Softshell Jkt	116
3522	Kids Buller Puffer Jacket	120
3523	Kids Snowy Puffer Vest	122
3524	Kids Buffalo Jacket	132
3531	Kids Aspen Softshell Jacket	110

BUSINESS

1800	Mens Flat Front Pant	176
1801	Mens Pleated Front Pant	177
1900	Mens Henley	153
1901	Mens Toorak	157
1902	Mens Grange	161
1903	Mens Mosman	164
1905	Mens Belair	169
1906	Mens Bayview	173
1907	Mens Epsom	149
1908	Mens Devonport	145
1909	Mens Brighton	141
1910	Mens Kingswood	137
2800	Ladies Classic Pant	177
2802	Ladies Classic Skirt	179
2900	Ladies Henley	155
2901	Ladies Toorak	159
2902	Ladies Grange	163
2903	Ladies Mosman	167
2905	Ladies Belair	171
2906	Ladies Bayview	175
2907	Ladies Epsom	150
2908	Ladies Devonport	146
2909	Ladies Brighton	143
2910	Ladies Kingswood	139

SUBLIMATION

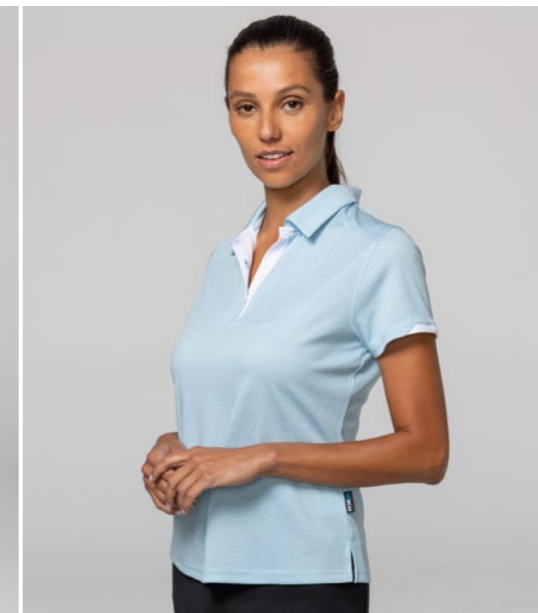
Dye Sublimation	182
Ap Design Requirements	188

How To Measure	180
Decoration Options	189
Colour Guide	190

NEW



light grey/white black marle/white navy/white slate/black army green/white light blue/white



MORRIS polo



1317 MENS Size: S-3XL+5XL 2317 LADIES Size: 6-26

TECHNICAL FEATURES

- Fabric Weight: 150gm
- Fabric: 100% polyester **DRWEAR™**
- Double Knit Melange Pique

UNIQUE SELLING POINTS

- Set in sleeve polo with self fabric collar
- Feature contrast centre sleeve hem finish and inner front placket
- Loose pocket included (men's only)
- Side splits for modern fit and enhanced movement

MENS	S	M	L	XL	XXL	3XL	5XL				
1/2 CHEST	53	55.5	58	60.5	63	68	73				
variations +/- 1 cm (guide only)											
LADIES	6	8	10	12	14	16	18	20	22	24	26
1/2 CHEST	42.5	45	47.5	50	52.5	55	57.5	60	64.5	69.5	74.5
variations +/- 1 cm (guide only)											



NEW



black/white black/red black/electric orange black/electric royal black/electric purple



black/army green black/kawa green black/gold navy/white navy/gold



navy/silver navy/red navy/sky charcoal/black red/silver



royal/silver bottle/silver white/navy



MANLY polo



1318 MENS Size: S-3XL+5XL **2318 LADIES** Size: 6-26 **3318 KIDS** Size: 4-16

TECHNICAL FEATURES

- Fabric Weight: 150gm
- Fabric: 100% polyester **DRWEAR™** mesh cool

UNIQUE SELLING POINTS

- Raglan sleeve polo with self fabric collar
- Contrast self fabric front placket, collar and sleeve
- Loose pocket included (men's only)
- Side splits for modern fit and enhanced movement

MENS	S	M	L	XL	XXL	3XL	5XL
1/2 CHEST	53	55.5	58	60.5	63	68	73
variations +/- 1 cm (guide only)							

LADIES	6	8	10	12	14	16	18	20	22	24	26
1/2 CHEST	42.5	45	47.5	50	52.5	55	57.5	60	64.5	69.5	74.5
variations +/- 1 cm (guide only)											

KIDS	4	6	8	10	12	14	16
1/2 CHEST	36	38	40	42	44	46	49
variations +/- 1 cm (guide only)							



NEW



black/white black/teal black/red black/gold



navy/red navy/gold navy/sky navy/white



white/navy red/white royal/white slate/black



bottle/gold maroon/white



COTTESLOE polo



1319 MENS Size: S-3XL+5XL **2319 LADIES** Size: 6-26 **3319 KIDS** Size: 4-16

TECHNICAL FEATURES

- Fabric Weight: 155gm
- Fabric: 100% polyester **DRWEAR™** new mesh knit

UNIQUE SELLING POINTS

- Light weight comfortable smart polo + jacquard knitted collar & cuff
- Contrast self fabric inner comfort band & under placket
- Soft and breathable fabric
- Loose pocket included (men's only)
- Side splits for modern fit and enhanced movement

MENS	S	M	L	XL	XXL	3XL	5XL
1/2 CHEST	53	55.5	58	60.5	63	68	73
variations +/- 1 cm (guide only)							

LADIES	6	8	10	12	14	16	18	20	22	24	26
1/2 CHEST	42.5	45	47.5	50	52.5	55	57.5	60	64.5	69.5	74.5
variations +/- 1 cm (guide only)											

KIDS	4	6	8	10	12	14	16
1/2 CHEST	36	38	40	42	44	46	49
variations +/- 1 cm (guide only)							



NEW



black/white black/red black/gold black/kawa green



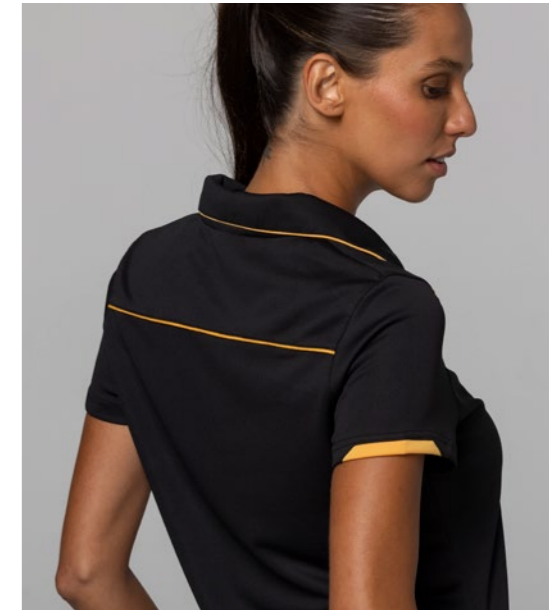
black/cyan slate/black slate/hi viz green slate/hi viz orange



navy/white navy/red navy/gold navy/kawa green



royal/white red/white kawa green/black purple/white



CURRUMBIN polo



1320 MENS Size: S-3XL+5XL **2320 LADIES** Size: 6-26 **3320 KIDS** Size: 4-16

TECHNICAL FEATURES

- Fabric Weight: 160gm
- Fabric: 100% polyester **DRiWEAR™** mini waffle knit

UNIQUE SELLING POINTS

- Self fabric collar with contrast under collar with piping effect
- Contrast piping at front & back yoke
- Feature contrast centre sleeve hem finish
- Loose pocket included (men's only)
- Side splits for modern fit and enhanced movement

MENS	S	M	L	XL	XXL	3XL	5XL
1/2 CHEST	53	55.5	58	60.5	63	68	73
variations +/- 1 cm (guide only)							

LADIES	6	8	10	12	14	16	18	20	22	24	26
1/2 CHEST	42.5	45	47.5	50	52.5	55	57.5	60	64.5	69.5	74.5
variations +/- 1 cm (guide only)											

KIDS	4	6	8	10	12	14	16
1/2 CHEST	36	38	40	42	44	46	49
variations +/- 1 cm (guide only)							



NEW



black/white white/slate royal/white navy/white slate/black red/white



PORTSEA polo



1321 MENS Size: S-3XL+5XL 2321 LADIES Size: 6-26

TECHNICAL FEATURES

- Fabric Weight: 180gm
- Fabric: 80% polyester 20% cotton (cotton back fabric)

UNIQUE SELLING POINTS

- Set in sleeve polo with jacquard knitted collar & cuff
- Loose pocket included (men's only)
- Side splits for modern fit and enhanced movement
- Contrast tape at inner comfort band & inner side splits

MENS	S	M	L	XL	XXL	3XL	5XL				
1/2 CHEST	53	55.5	58	60.5	63	68	73				
variations +/- 1 cm (guide only)											
LADIES	6	8	10	12	14	16	18	20	22	24	26
1/2 CHEST	42.5	45	47.5	50	52.5	55	57.5	60	64.5	69.5	74.5
variations +/- 1 cm (guide only)											



NEW



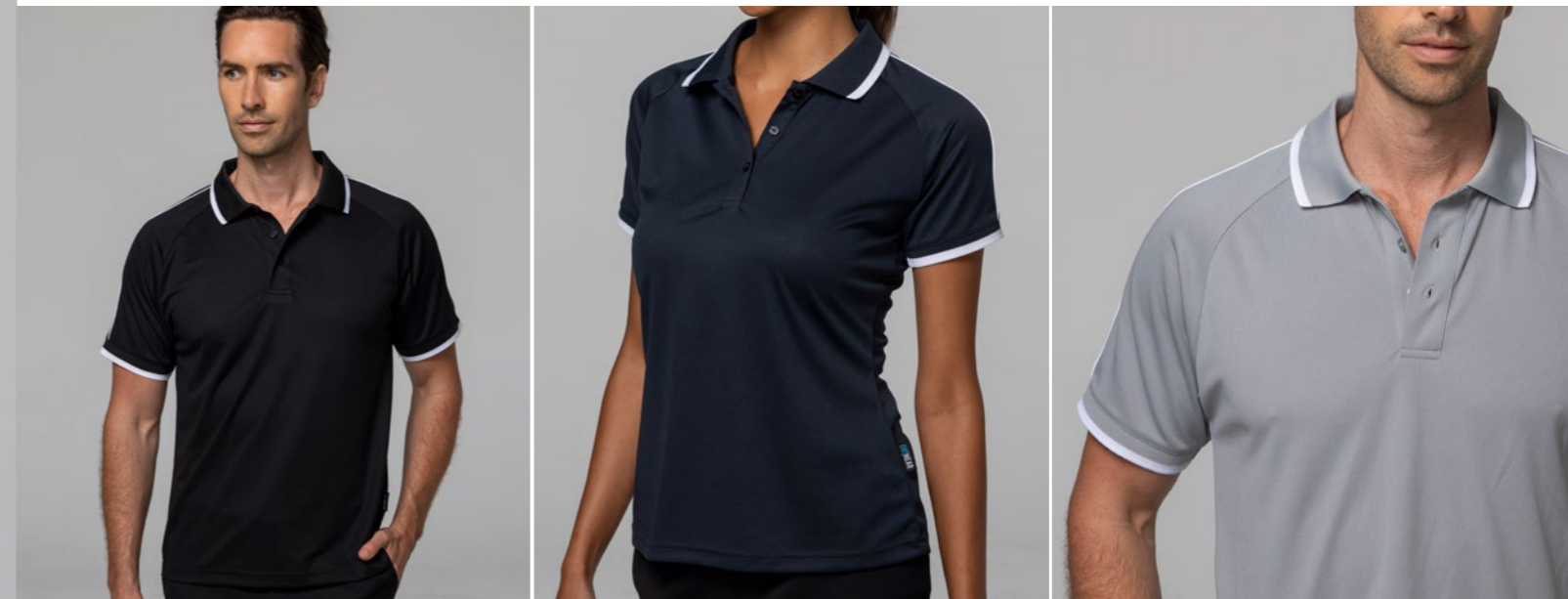
black/white

navy/white

red/white

royal/white

silver/white



DOUBLE BAY polo



1322 MENS Size: S-3XL+5XL 2322 LADIES Size: 6-26

TECHNICAL FEATURES

- Fabric Weight: 155gm
- Fabric: 100% polyester **DRWEAR™** new mesh knit

UNIQUE SELLING POINTS

- Light weight comfortable raglan sleeve polo
- Jacquard knitted collar & cuff with contrast stripe
- Feature contrast piping upper front sleeve
- Soft and breathable fabric
- Loose pocket provided (men's only)

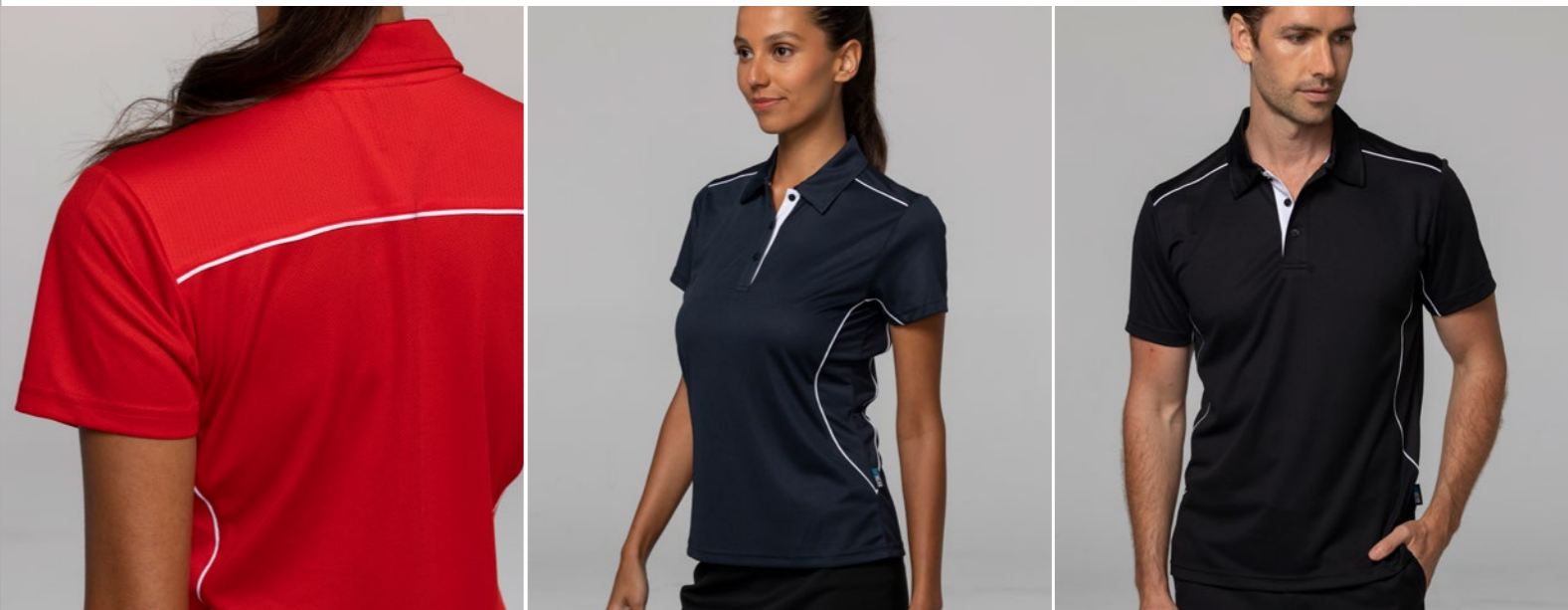
MENS	S	M	L	XL	XXL	3XL	5XL				
1/2 CHEST	53	55.5	58	60.5	63	68	73				
variations +/- 1 cm (guide only)											
LADIES	6	8	10	12	14	16	18	20	22	24	26
1/2 CHEST	42.5	45	47.5	50	52.5	55	57.5	60	64.5	69.5	74.5
variations +/- 1 cm (guide only)											



NEW



black/white navy/fluro orange navy/white slate/fluro green red/white royal/white white/navy



KURANDA polo



1323 MENS Size: S-3XL+5XL 2323 LADIES Size: 6-26

TECHNICAL FEATURES

- Fabric Weight: 155gm
- Body: 100% polyester **DRWEAR™** new mesh knit
- Panels: 100% polyester **DRWEAR™** ice mesh

UNIQUE SELLING POINTS

- Set in sleeve polo with self fabric collar
- Front & back yoke and side panel in ice mesh with contrast piping
- Under front sleeve panel with contrast piping
- Loose pocket provided (men's only)
- Contrast self fabric under front placket

MENS	S	M	L	XL	XXL	3XL	5XL				
1/2 CHEST	53	55.5	58	60.5	63	68	73				
variations +/- 1 cm (guide only)											
LADIES	6	8	10	12	14	16	18	20	22	24	26
1/2 CHEST	42.5	45	47.5	50	52.5	55	57.5	60	64.5	69.5	74.5
variations +/- 1 cm (guide only)											



NEW



black/white

navy/white

royal/white

silver/black

red/white



VAUCLUSE polo



1324 MENS Size: S-3XL+5XL 2324 LADIES Size: 6-26

TECHNICAL FEATURES

- Fabric Weight: 180gm
- Fabric: 100% polyester **DRWEAR™** engineered stripe

UNIQUE SELLING POINTS

- Set in sleeve polo with jacquard knitted collar
- Self fabric inner comfort band
- Loose pocket included (men's only)
- Side splits for modern fit and enhanced movement

MENS	S	M	L	XL	XXL	3XL	5XL				
1/2 CHEST	53	55.5	58	60.5	63	68	73				
variations +/- 1 cm (guide only)											
LADIES	6	8	10	12	14	16	18	20	22	24	26
1/2 CHEST	42.5	45	47.5	50	52.5	55	57.5	60	64.5	69.5	74.5
variations +/- 1 cm (guide only)											



NOOSA polo



NEW



black

white

navy

cyan



NOOSA polo



1325 MENS Size: S-3XL+5XL 2325 LADIES Size: 6-26

TECHNICAL FEATURES

- Fabric Weight: 230gm
- Fabric: 86% **DRWEAR**™ recycled polyester 14% spandex

UNIQUE SELLING POINTS

- Set in sleeve polo with jacquard knitted collar
- Loose pocket included (men's only)
- Side splits for modern fit and enhanced movement

MENS	S	M	L	XL	XXL	3XL	5XL
1/2 CHEST	53	55.5	58	60.5	63	68	73
variations +/- 1 cm (guide only)							

LADIES	6	8	10	12	14	16	18	20	22	24	26
1/2 CHEST	42.5	45	47.5	50	52.5	55	57.5	60	64.5	69.5	74.5
variations +/- 1 cm (guide only)											





*7XL available in black, white & navy only.

HUNTER polo



1312 MENS Size: S-3XL+5XL+7XL* **2312 LADIES** Size: 6-26 **3312 KIDS** Size: 4-16

TECHNICAL FEATURES

- Fabric Weight: 210gm
- Fabric: 65% **DRWEAR™** polyester 35% cotton pique knit

UNIQUE SELLING POINTS

- Pique knit for a corporate look and feel
- Soft and breathable fabric for comfort
- Snag resistant fabric for longevity
- Loose pocket included (men's only)
- Side splits for modern fit and enhanced movement

MENS	S	M	L	XL	XXL	3XL	5XL	7XL*			
1/2 CHEST	53	55.5	58	60.5	63	68	73	78			
variations +/- 1 cm (guide only)											
LADIES	6	8	10	12	14	16	18	20	22	24	26
1/2 CHEST	42.5	45	47.5	50	52.5	55	57.5	60	64.5	69.5	74.5
variations +/- 1 cm (guide only)											
KIDS	4	6	8	10	12	14	16				
1/2 CHEST	36	38	40	42	44	46	49				
variations +/- 1 cm (guide only)											





black white navy slate royal



cyan neon green red silver

* 7XL available in black & navy only.

LACHLAN polo



1314 MENS Size: S-3XL+5XL+7XL 2314 LADIES Size: 6-26

TECHNICAL FEATURES

- Fabric Weight: 160gm
- Fabric: 100% **DRiWEAR™** polyester honeycomb knit

UNIQUE SELLING POINTS

- Honeycomb knit, feel of cotton with the performance of polyester
- Knitted cuffs create a fitted look
- Loose pocket provided (men's only)
- Side splits for modern fit and enhanced movement
- Knitted collar and cuff

MENS	S	M	L	XL	XXL	3XL	5XL	7XL*			
1/2 CHEST	53	55.5	58	60.5	63	68	73	78			
variations +/- 1 cm (guide only)											
LADIES	6	8	10	12	14	16	18	20	22	24	26
1/2 CHEST	42.5	45	47.5	50	52.5	55	57.5	60	64.5	69.5	74.5
variations +/- 1 cm (guide only)											





CLAREMONT polo



1315 MENS Size: S-3XL+5XL 2315 LADIES Size: 6-26

TECHNICAL FEATURES

- Fabric Weight: 200gm
- Fabric: 95% cotton 5% elastane pique knit

UNIQUE SELLING POINTS

- Light weight cotton fabric with elastane creates the ultimate in comfort
- Knitted cuffs create a fitted look
- Loose pocket provided (men's only)
- Side splits for modern fit and enhanced movement
- Knitted collar and cuff

MENS	S	M	L	XL	XXL	3XL	5XL				
1/2 CHEST	53	55.5	58	60.5	63	68	73				
variations +/- 1 cm (guide only)											
LADIES	6	8	10	12	14	16	18	20	22	24	26
1/2 CHEST	42.5	45	47.5	50	52.5	55	57.5	60	64.5	69.5	74.5
variations +/- 1 cm (guide only)											



NEW COLOURS



black

white

navy

slate



pacific blue

royal

red

KEIRA polo

1306 MENS Size: S-3XL+5XL 2306 LADIES Size: 6-26



180gm 80% polyester **DRWEAR™** 20% cotton
 moisture removal cottonback pique knit, easy
 care fabric, raglan sleeve, knitted collar and three-button
 placket.
 (Loose pocket mens only).

MENS	S	M	L	XL	XXL	3XL	5XL
1/2 CHEST	53	55.5	58	60.5	63	68	73
variations +/- 1 cm (guide only)							

LADIES	6	8	10	12	14	16	18	20	22	24	26
1/2 CHEST	42.5	45	47.5	50	52.5	55	57.5	60	64.5	69.5	74.5
variations +/- 1 cm (guide only)											





black white navy royal red sky



maroon gold bottle



BOTANY polo

1307 MENS Size: S-3XL+5XL **2307 LADIES** Size: 6-26 **3307 KIDS** Size: 4-16



160gm 100% polyester **DRWEAR™** mini-waffle knit, with moisture removal technology, easy care fabric and self fabric collar and a three-button placket. (Loose pocket - mens only).

MENS	S	M	L	XL	XXL	3XL	5XL
1/2 CHEST	53	55.5	58	60.5	63	68	73
variations +/- 1 cm (guide only)							

LADIES	6	8	10	12	14	16	18	20	22	24	26
1/2 CHEST	42.5	45	47.5	50	52.5	55	57.5	60	64.5	69.5	74.5
variations +/- 1 cm (guide only)											

KIDS	4	6	8	10	12	14	16
1/2 CHEST	36	38	40	42	44	46	49
variations +/- 1 cm (guide only)							



NEW



black

white



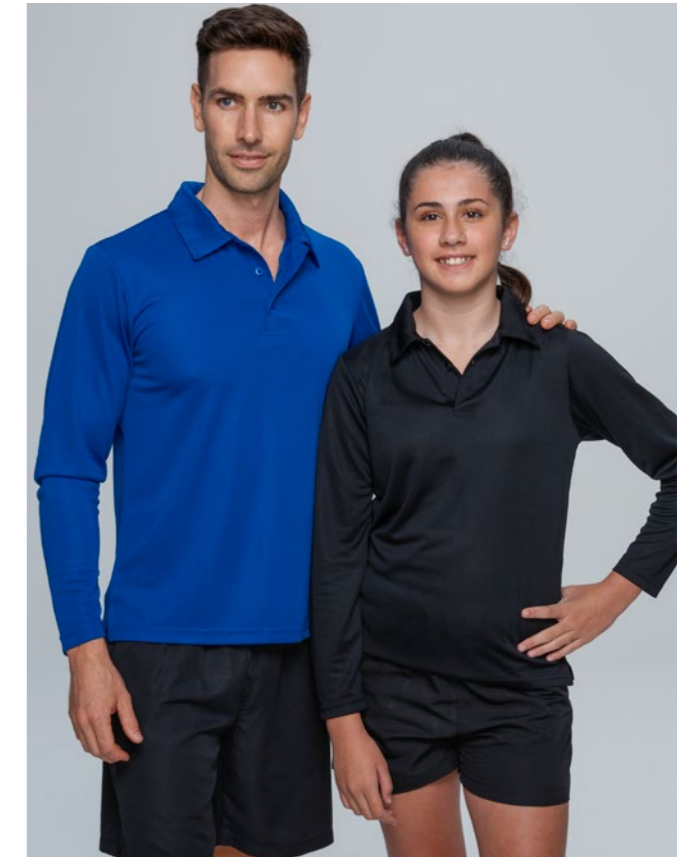
navy

royal



red

gold



BOTANY L/S polo

1316 MENS Size: S-3XL+5XL 3316 KIDS Size: 4-16



160gm 100% polyester **DRWEAR™** mini-waffle knit, with moisture removal technology, easy care fabric and self fabric collar and a three-button placket. (Loose pocket - mens only).

MENS	S	M	L	XL	XXL	3XL	5XL
1/2 CHEST	53	55.5	58	60.5	63	68	73
variations +/- 1 cm (guide only)							
KIDS	4	6	8	10	12	14	16
1/2 CHEST	36	38	40	42	44	46	49
variations +/- 1 cm (guide only)							





FLINDERS polo

1308 MENS Size: S-3XL+5XL 2308 LADIES Size: 6-26



155gm 100% **DRYWEAR™** polyester moisture removal birdseye knit, easy care fabric, signature knit collar and arm band, three-button placket.
(Loose pocket - mens only).

MENS	S	M	L	XL	XXL	3XL	5XL				
1/2 CHEST	53	55.5	58	60.5	63	68	73				
variations +/- 1 cm (guide only)											
LADIES	6	8	10	12	14	16	18	20	22	24	26
1/2 CHEST	42.5	45	47.5	50	52.5	55	57.5	60	64.5	69.5	74.5
variations +/- 1 cm (guide only)											





white/ navy navy/ white navy/ gold navy/ red

black/ white black/ gold black/ red red/ white

sky/ navy royal/ white teal/ black hot pink/ white (Ladies only)

YARRA polo

1302 MENS Size: XS-3XL+5XL **2302 LADIES** Size: 8-10 ~ 24-26



160gm 100% polyester **DRWEAR™** mini-waffle knit, with moisture removal technology, easy care fabric, self fabric V neck collar for ladies and contrast piping on the placket and sleeve. (Loose pocket - mens only).

PLEASE NOTE: Size XS available while stocks last.

MENS	XS	S	M	L	XL	XXL	3XL	5XL
1/2 CHEST	50.5	53	55.5	58	60.5	63	68	73
variations +/- 1 cm (guide only)								
LADIES	8-10	12-14	16-18	20-22	24-26			
1/2 CHEST	43	48	53	60	67			
variations +/- 1 cm (guide only)								





ENDEAVOUR polo

1310 MENS Size: S-3XL+5XL 2310 LADIES Size: 6-26



155gm 100% **DRYWEAR™** polyester moisture removal
 birdseye knit, easy care fabric, traditional piping
 and self fabric collar.
 Ladies has a V neck johnny collar.
 Mens has a three-button placket.
 (Loose pocket - mens only).

MENS	S	M	L	XL	XXL	3XL	5XL				
1/2 CHEST	53	55.5	58	60.5	63	68	73				
variations +/- 1 cm (guide only)											
LADIES	6	8	10	12	14	16	18	20	22	24	26
1/2 CHEST	42.5	45	47.5	50	52.5	55	57.5	60	64.5	69.5	74.5
variations +/- 1 cm (guide only)											





Available in mens & ladies only



black/ white (M,L) black/ red (M,L) black/ ashe (M,L) black/ gold (M,L) black/ royal (M,L) black/ teal (M,L) black/orange (M,L) white/ black (M,L) white/ navy (M,L) navy/ red (M,L)

(M,L) = mens & ladies only

Available in mens, ladies & kids



navy/ white navy/ gold navy/ sky pacific blue/ white maroon/ gold



red/ white royal/ white purple/ white gold/ black side view



PATERSON polo

1305 MENS Size: S-3XL+5XL **2305 LADIES** Size: 6-26 **3305 KIDS** Size: 4-16



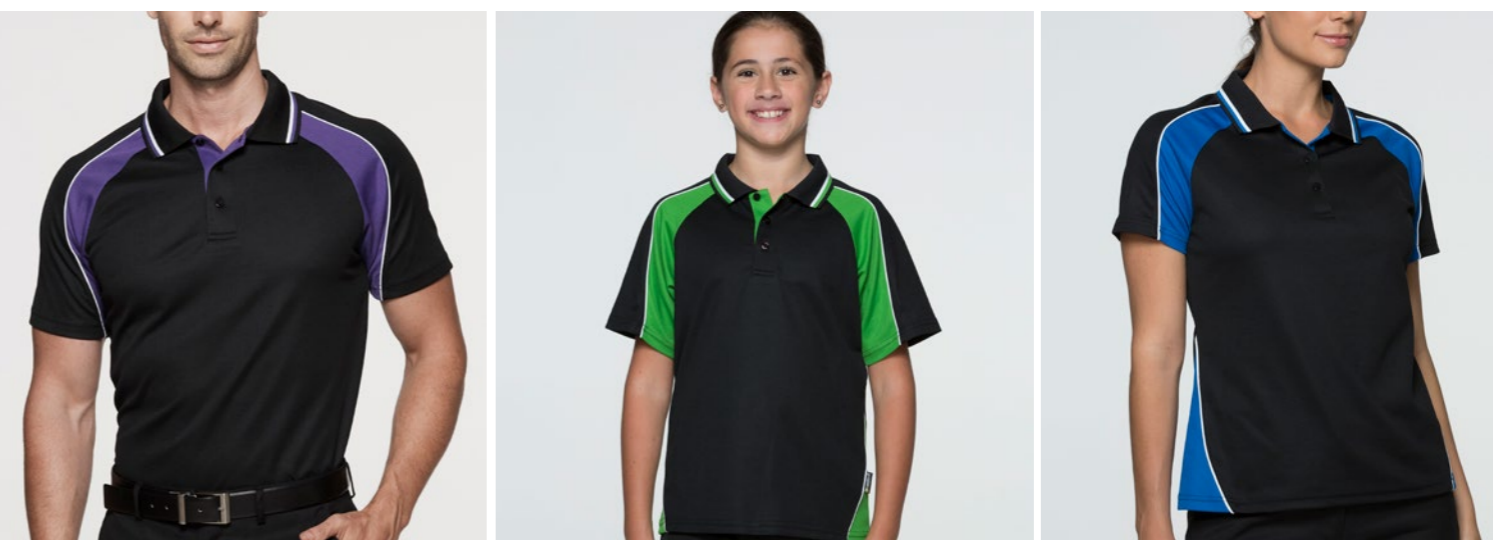
180gm 80% polyester **DRWEAR™** 20% cotton
moisture removal, cottonback pique knit, easy care fabric with a self fabric collar and contrast panels.
Three-button placket, kids sizes 4, 6 and 8 only have two buttons.
(Loose pocket - mens only).

MENS	S	M	L	XL	XXL	3XL	5XL
1/2 CHEST	53	55.5	58	60.5	63	68	73
variations +/- 1 cm (guide only)							

LADIES	6	8	10	12	14	16	18	20	22	24	26
1/2 CHEST	42.5	45	47.5	50	52.5	55	57.5	60	64.5	69.5	74.5
variations +/- 1 cm (guide only)											

KIDS	4	6	8	10	12	14	16
1/2 CHEST	36	38	40	42	44	46	49
variations +/- 1 cm (guide only)							





PANORAMA polo

1309 MENS Size: S-3XL+5XL **2309 LADIES** Size: 6-26 **3309 KIDS** Size: 4-16



180gm 80% polyester **DRWEAR™** 20% cotton moisture removal, cottonback pique knit, easy care fabric and traditional knit collar with contrast stripes, panels and piping.
 Three-button placket on mens and a two-button placket for kids sizes 4, 6 and 8.
 (Loose pocket - mens only).

MENS	S	M	L	XL	XXL	3XL	5XL				
1/2 CHEST	53	55.5	58	60.5	63	68	73				
variations +/- 1 cm (guide only)											
LADIES	6	8	10	12	14	16	18	20	22	24	26
1/2 CHEST	42.5	45	47.5	50	52.5	55	57.5	60	64.5	69.5	74.5
variations +/- 1 cm (guide only)											
KIDS	4	6	8	10	12	14	16				
1/2 CHEST	36	38	40	42	44	46	49				
variations +/- 1 cm (guide only)											





TASMAN polo



1311 MENS Size: S-3XL+5XL **2311 LADIES** Size: 4-26 **3311 KIDS** Size: 4-16

TECHNICAL FEATURES

- Fabric Weight: 150gm
- Fabric: 100% polyester **DRWEAR™** moisture removal micro-knit
- Snag resistant

UNIQUE SELLING POINTS

- Easy care fabric for when you are on the go
- Contrast design elements under collar, side panels, sleeve and placket
- Loose pocket provided (men's only)
- Side splits for modern fit and enhanced movement

MENS	S	M	L	XL	XXL	3XL	5XL
1/2 CHEST	53	55.5	58	60.5	63	68	73

variations +/- 1 cm (guide only)

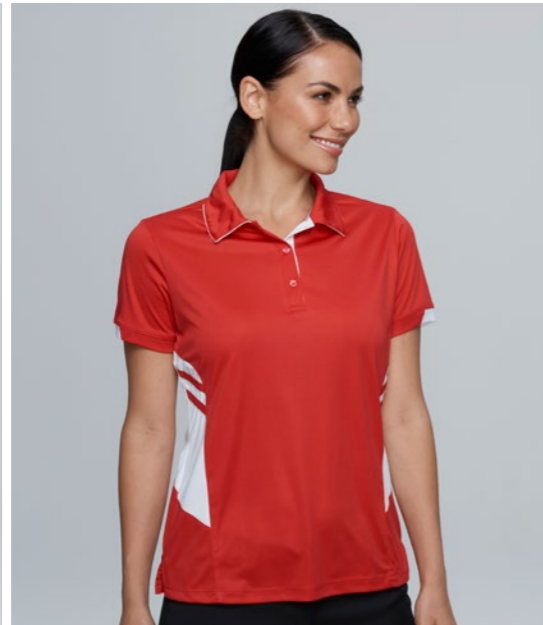
LADIES	4	6	8	10	12	14	16	18	20	22	24	26
1/2 CHEST	40	42.5	45	47.5	50	52.5	55	57.5	60	64.5	69.5	74.5

variations +/- 1 cm (guide only)

KIDS	4	6	8	10	12	14	16
1/2 CHEST	36	38	40	42	44	46	49

variations +/- 1 cm (guide only)

Disclaimer: Please note neon colours will vary on the actual garment due to the difficulty in matching with printing. Strongly suggest purchasing a sample for assurance.





PREMIER polo



1301 MENS Size: XS-3XL+5XL **2301 LADIES** Size: 8-26 **3301 KIDS** Size: 6-16

160gm 100% polyester **DRWEAR™** mini-waffle knit, with moisture removal technology, easy care fabric, self fabric collar with piping highlights, three-button placket, contrast piping and panels.
 (Loose pocket - mens only).
 Styled V neck for ladies
 PLEASE NOTE: Size XS available while stocks last.

MENS	XS	S	M	L	XL	XXL	3XL	5XL		
1/2 CHEST	50.5	53	55.5	58	60.5	63	68	73		
variations +/- 1 cm (guide only)										
LADIES	8	10	12	14	16	18	20	22	24	26
1/2 CHEST	45	47.5	50	52.5	55	57.5	60	64.5	69.5	74.5
variations +/- 1 cm (guide only)										
KIDS	6	8	10	12	14	16				
1/2 CHEST	38	40	42	44	46	49				
variations +/- 1 cm (guide only)										





EUREKA polo

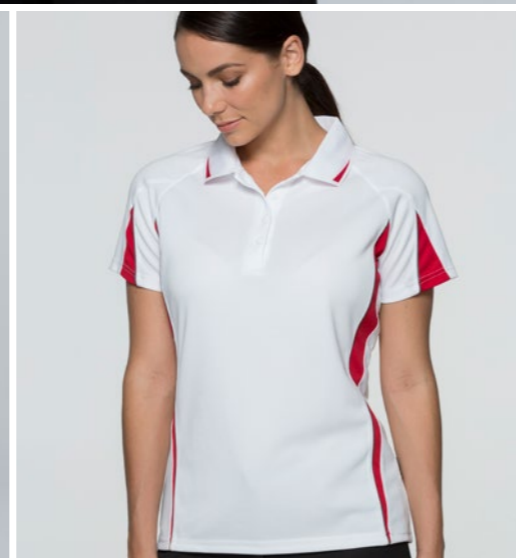


1304 MENS Size: S-3XL+5XL **2304 LADIES** Size: 8-26 **3304 KIDS** Size: *4-16

160gm 100% polyester **DRWEAR™** mini-waffle knit, with moisture removal technology, easy care fabric, traditional knit collar with contrast signature, coloured highlight piping and a three-button placket.
(Loose pocket - mens only).
Hi Viz mens polo - has pre attached square pocket.
Ladies placket has 4 buttons.

*NOTE: Size 4 available in white/royal, bottle/white, bottle/gold, maroon/white, navy/white, navy/gold, red/white, royal/white, royal/gold, royal/red, sky/navy

MENS	S	M	L	XL	XXL	3XL	5XL			
1/2 CHEST	53	55.5	58	60.5	63	68	73			
variations +/- 1 cm (guide only)										
LADIES	8	10	12	14	16	18	20	22	24	26
1/2 CHEST	45	47.5	50	52.5	55	57.5	60	64.5	69.5	74.5
variations +/- 1 cm (guide only)										
KIDS	*4	6	8	10	12	14	16			
1/2 CHEST	36	38	40	42	44	46	49			
variations +/- 1 cm (guide only)										





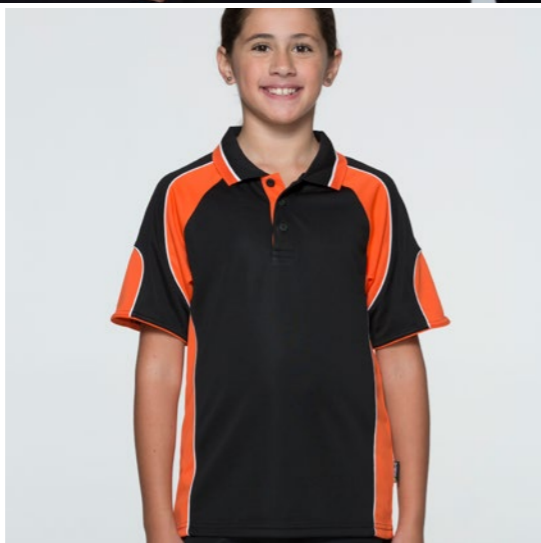
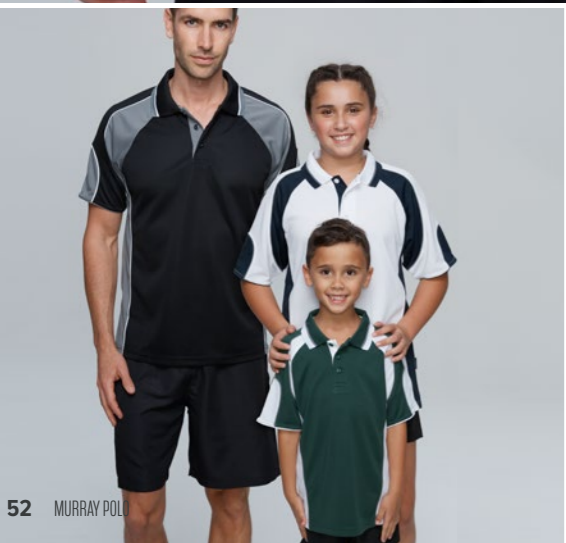
MURRAY polo

1300 MENS Size: S-3XL+5XL **2300 LADIES** Size: 8-26 **3300 KIDS** Size: 6-16



160gm 100% polyester **DRWEAR™** moisture removal, mini-waffle knit easy care fabric, traditional knit collar with contrast stripes, curved sleeve panel and a 3 button placket. (Loose pocket - mens only).

MENS	S	M	L	XL	XXL	3XL	5XL			
1/2 CHEST	52	54.5	57	59.5	62	64.5	72			
variations +/- 1 cm (guide only)										
LADIES	8	10	12	14	16	18	20	22	24	26
1/2 CHEST	45	47.5	50	52.5	55	57.5	60	64.5	69.5	74.5
variations +/- 1 cm (guide only)										
KIDS	6	8	10	12	14	16				
1/2 CHEST	38	40	42	44	46	49				
variations +/- 1 cm (guide only)										





TEES
SINGLET
TRACK TOPS
PANTS &
SHORTS



Disclaimer: Please note neon colours will vary on the actual garment due to the difficulty in matching with printing. Strongly suggest purchasing a sample for assurance.

TASMAN tee

1211 MENS Size: S-3XL+5XL 2211 LADIES Size: 4-20 3211 KIDS Size: 4-16



150gm 100% polyester **DRWEAR™** moisture removal microknit, snag resistant easy care fabric. Mens and kids have round self fabric neck bind, V neck self fabric neck bind for ladies.

Contrast side panels with highlight details on sleeve and back neck reflective tab for ear phones.

MENS	S	M	L	XL	XXL	3XL	5XL
1/2 CHEST	53	55.5	58	60.5	63	68	73

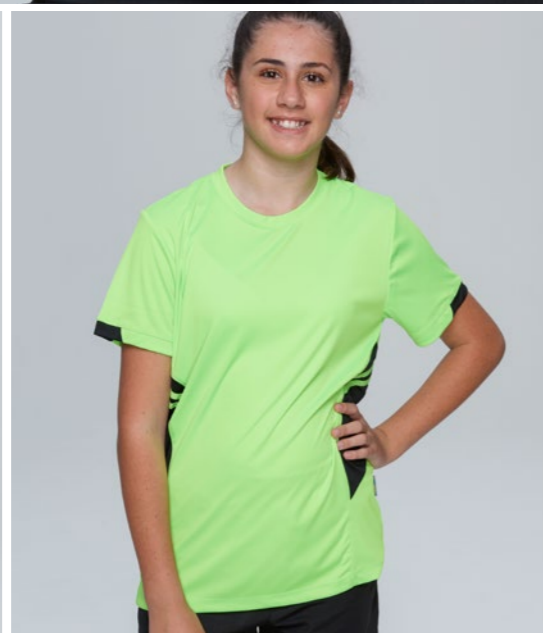
variations +/- 1 cm (guide only)

LADIES	4	6	8	10	12	14	16	18	20
1/2 CHEST	40	42.5	45	47.5	50	52.5	55	57.5	60

variations +/- 1 cm (guide only)

KIDS	4	6	8	10	12	14	16
1/2 CHEST	36	38	40	42	44	46	49

variations +/- 1 cm (guide only)



TASMAN singlet



Disclaimer: Please note neon colours will vary on the actual garment due to the difficulty in matching with printing. Strongly suggest purchasing a sample for assurance.

TASMAN singlet

1111 MENS Size: S-3XL+5XL **2111 LADIES** Size: 4-20 **3111 KIDS** Size: 4-16



150gm 100% polyester **DRWEAR™** moisture removal microknit, snag resistant easy care fabric. Mens and kids have round self fabric neck bind, V neck self fabric neck bind for ladies.

Contrast side panels with highlight details on sleeve and back neck reflective tab for ear phones.

MENS	S	M	L	XL	XXL	3XL	5XL
1/2 CHEST	51	53.5	56	58.5	61	63.5	68.5

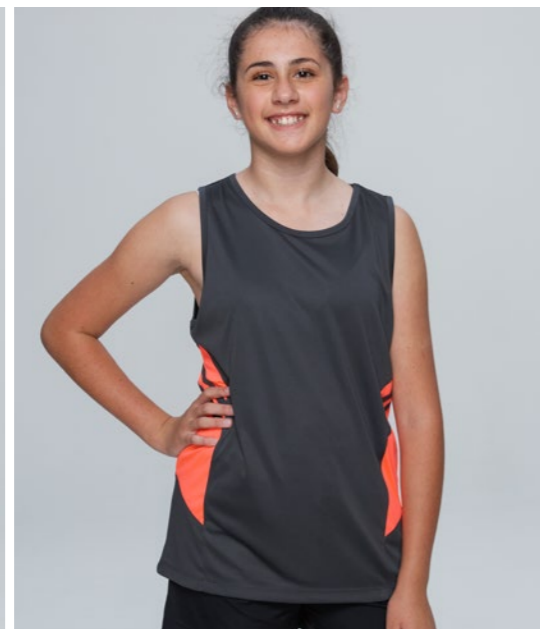
variations +/- 1 cm (guide only)

LADIES	4	6	8	10	12	14	16	18	20
1/2 CHEST	38.5	41	43.5	46	48.5	51	53.5	56.5	59.5

variations +/- 1 cm (guide only)

KIDS	4	6	8	10	12	14	16
1/2 CHEST	35	37	39	41	43	45	48

variations +/- 1 cm (guide only)





BOTANY tee

1207 MENS Size: S-3XL+5XL **3207 KIDS** Size: 4-16



160gm 100% polyester **DRWEAR™** mini-waffle knit, with moisture removal technology, easy care fabric and self fabric binding on armhole and neck.

Mens and kids have round self fabric neck bind.

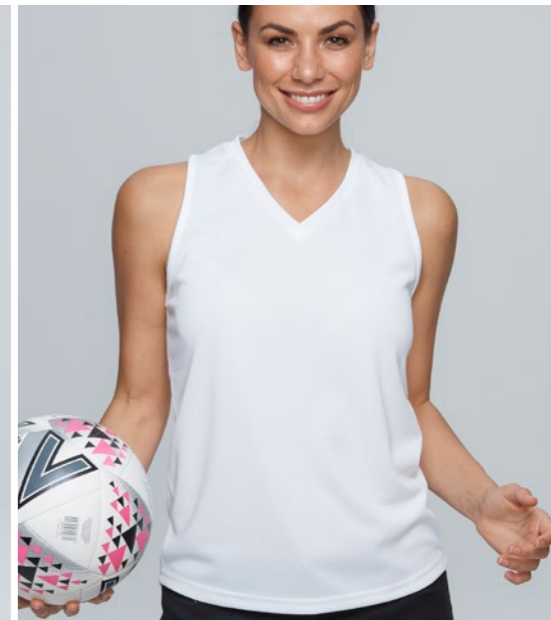
MENS	S	M	L	XL	XXL	3XL	5XL
I/2 CHEST	53	55.5	58	60.5	63	68	73
variations +/- 1 cm (guide only)							
KIDS	4	6	8	10	12	14	16
I/2 CHEST	36	38	40	42	44	46	49
variations +/- 1 cm (guide only)							





white black navy royal (M,K) red (M,K) sky (M,K) maroon (M,K) gold (M,K) bottle (M,K)

(M,K) = mens & kids only



BOTANY singlet

1107 MENS Size: S-3XL+5XL **2107 KIDS** Size: 6-20 **3107 KIDS** Size: 4-16



160gm 100% polyester **DRWEAR™** mini-waffle knit, with moisture removal technology, easy care fabric and self fabric binding on armhole and neck.

Mens and kids have round self fabric neck bind, V neck self fabric neck bind for ladies.

MENS	S	M	L	XL	XXL	3XL	5XL
1/2 CHEST	51	53.5	56	58.5	61	63.5	68.5

variations +/- 1 cm (guide only)

LADIES	6	8	10	12	14	16	18	20
1/2 CHEST	41	43.5	46	48.5	51	53.5	56.5	59.5

variations +/- 1 cm (guide only)

KIDS	4	6	8	10	12	14	16
1/2 CHEST	35	37	39	41	43	45	48

variations +/- 1 cm (guide only)





white/ black white/ royal white/ red navy/ red navy/ white

black/ white black/ gold black/ orange black/ red red/ white

sky/ navy royal/ white hot pink/ black orange/ charcoal side view

EUREKA tee

1204 MENS Size: S-3XL+5XL 3204 KIDS Size: 6-16



160gm 100% polyester **DRWEAR™** mini-waffle knit, with moisture removal technology, easy care fabric, self fabric neck bind and contrast colour highlights.

MENS	S	M	L	XL	XXL	3XL	5XL
1/2 CHEST	53	55.5	58	60.5	63	68	73
variations +/- 1 cm (guide only)							
KIDS	6	8	10	12	14	16	
1/2 CHEST	38	40	42	44	46	49	
variations +/- 1 cm (guide only)							





EUREKA singlet

1104 MENS Size: S-3XL+5XL **2104 LADIES** Size: 8-20 **3104 KIDS** Size: 6-16



160gm 100% polyester **DRWEAR™** mini-waffle knit, with moisture removal technology, easy care fabric, self fabric binding on armhole and neck with contrast colour highlights.

Mens and kids have round self fabric neck bind, V neck self fabric neck bind for ladies.

MENS	S	M	L	XL	XXL	3XL	5XL
1/2 CHEST	51	53.5	56	58.5	61	63.5	68.5
variations +/- 1 cm (guide only)							

LADIES	8	10	12	14	16	18	20
1/2 CHEST	43.5	46	48.5	51	53.5	56.5	59.5
variations +/- 1 cm (guide only)							

KIDS	6	8	10	12	14	16
1/2 CHEST	37	39	41	43	45	48
variations +/- 1 cm (guide only)						





navy/ white navy/ gold navy/ red black/ white



black/ gold black/ red black/ ash black/ teal

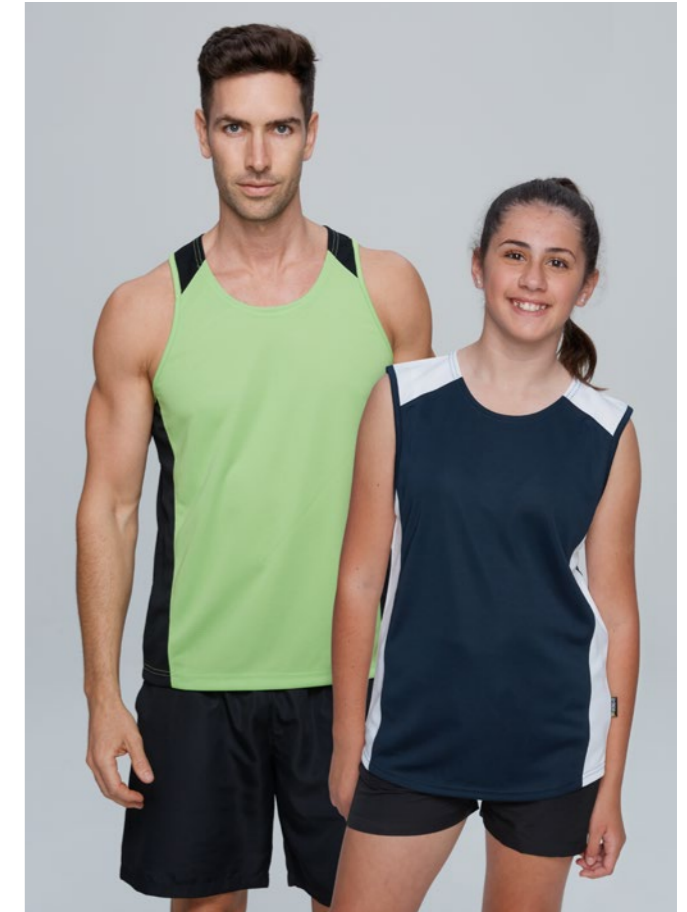


purple/ white apple/ black bottle/ gold burgundy/ white



white/ navy ash/ black royal/ gold royal/ white red/ white hot pink/ white (L) side view (L)

(L) =ladies only



PREMIER singlet

1101 MENS Size: S-3XL+5XL **2101 LADIES** Size: 8-20 **3101 KIDS** Size: 6-16



160gm 100% polyester **DRWEAR™** mini-waffle knit, with moisture removal technology, easy care fabric, contrast panels and highlights, and rounded neck.

Mens and kids have round self fabric neck bind, V neck self fabric neck bind for ladies.

MENS	S	M	L	XL	XXL	3XL	5XL
1/2 CHEST	51	53.5	56	58.5	61	63.5	68.5

variations +/- 1 cm (guide only)

LADIES	8	10	12	14	16	18	20
1/2 CHEST	43.5	46	48.5	51	53.5	56.5	59.5

variations +/- 1 cm (guide only)

KIDS	6	8	10	12	14	16
1/2 CHEST	37	39	41	43	45	48

variations +/- 1 cm (guide only)



NEW



black

navy

LIVERPOOL jacket

1609 MENS Size: S-3XL+5XL 3609 KIDS Size:4-16

TECHNICAL FEATURES

- Fabric Weight: 200gm
- Fabric: 100% polyester
- Brushed poly knit inner

UNIQUE SELLING POINTS

- High collar
- Side seam pocket & pocket bag
- Elasticated sleeve opening
- Design feature contrast piping front top through shoulder & sleeve
- Contrast zipper

MENS	S	M	L	XL	XXL	3XL	5XL
1/2 CHEST	57	59.5	62	64.5	67	72	74.5
variations +/- 1 cm (guide only)							
KIDS	4	6	8	10	12	14	16
1/2 CHEST	36	39	42	45	48	51	54
variations +/- 1 cm (guide only)							

LIVERPOOL pants



NEW

TAPERED FLEECE pants



NEW

LIVERPOOL pants



Black

Navy

1610 MENS Size: S-3XL+5XL **3610 KIDS** Size:4-16

TECHNICAL FEATURES

- Fabric Weight: 200gm
- Fabric: 100% polyester Brushed poly knit inner

UNIQUE SELLING POINTS

- Elasticated waist with inner drawcord
- Side front pockets & pocket bag
- Elasticated and zip closure leg opening
- Design feature contrast piping side front pant

MENS	S	M	L	XL	XXL	3XL	5XL
WAIST	37	39.5	42	44.5	47	49.5	54.5
INLEG LENGTH	76	76	76	76	77	77	77
variations +/- 1 cm (guide only)							
KIDS	4	6	8	10	12	14	16
WAIST	26	28	30	32	34	36	38
INLEG LENGTH	47	55	58	61	64	67	70
variations +/- 1 cm (guide only)							

TAPERED fleece pants



Black

Navy

grey marle

1608 MENS Size: S-3XL+5XL **3608 KIDS** Size:4-16

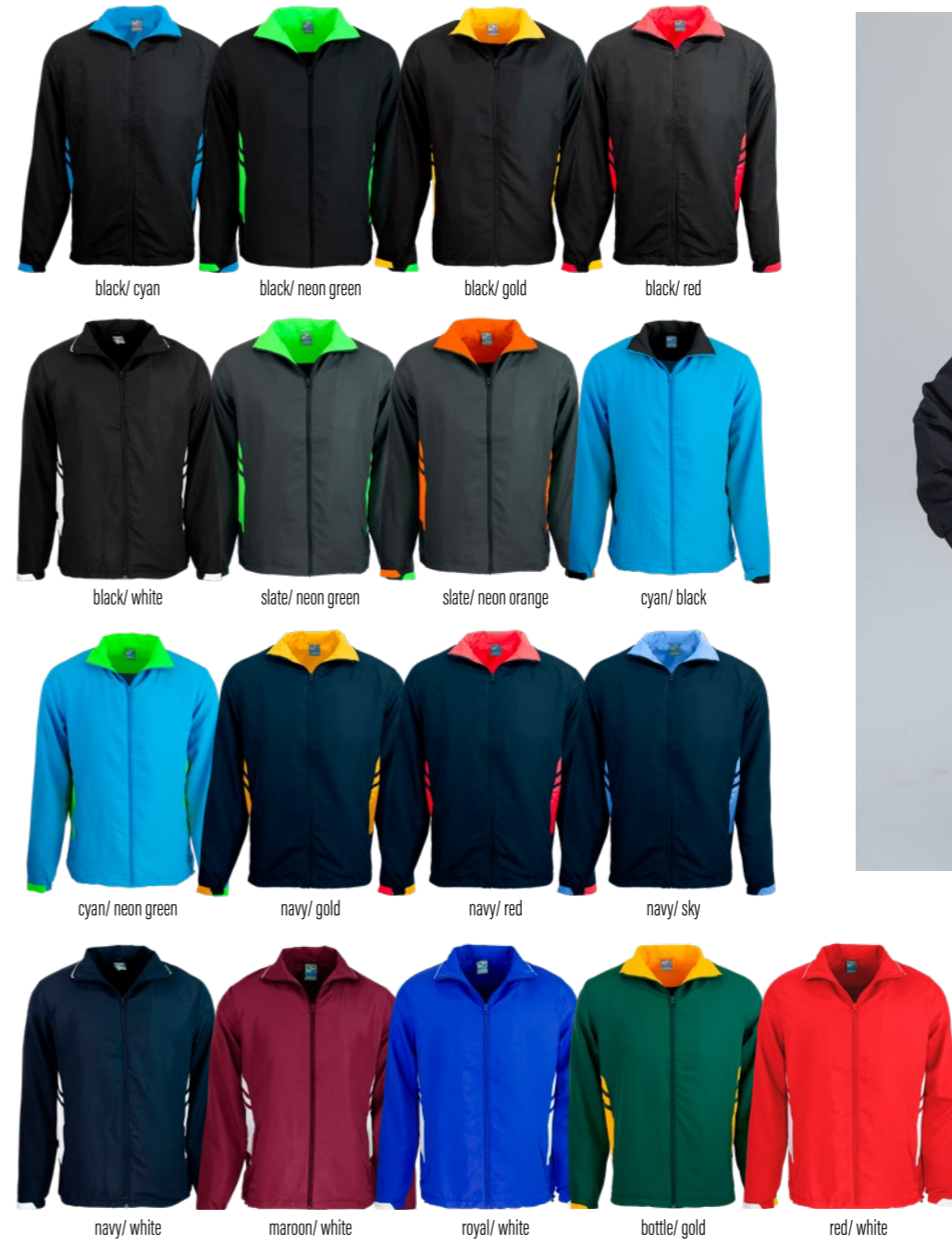
TECHNICAL FEATURES

- Fabric Weight: 280gm
- Fabric: 70% cotton 30% polyester brushed fleece

UNIQUE SELLING POINTS

- Elasticated waist with inner drawcord
- Side seam pockets & pocket bag
- Rib finish leg opening

MENS	S	M	L	XL	XXL	3XL	5XL
WAIST	37	39.5	42	44.5	47	49.5	54.5
INLEG LENGTH	76	76	76	76	77	77	77
variations +/- 1 cm (guide only)							
KIDS	4	6	8	10	12	14	16
WAIST	26	28	30	32	34	36	38
INLEG LENGTH	47	55	58	61	64	67	70
variations +/- 1 cm (guide only)							



TASMAN tracktop

1611 MENS Size: S-3XL+5XL **3611 KIDS** Size:4-16

100% polyester soft feel ripstop, contrast colour panels, 2 external zipped pockets, 2 internal pockets, stand up collar, jersey interlock lining and internal zip for easy decoration.

MENS	S	M	L	XL	XXL	3XL	5XL
1/2 CHEST	60	62	64	66	68	70	74
variations +/- 1 cm (guide only)							
KIDS	4	6	8	10	12	14	16
1/2 CHEST	42	45	48	51	54	57	60
variations +/- 1 cm (guide only)							





black/ white black/ gold black/ orange black/ red navy/ white navy/ sky navy/ red



navy/ gold royal/ white royal/ red royal/ gold



bottle/ white maroon/ white red/ white side view



EUREKA tracktop

1604 MENS Size: S-3XL+5XL **3604 KIDS** Size:6-16

100% polyester Pongee (Chinese silk), contrast colour panels with piping, 2 zipped pockets, stand up collar, jersey interlock lining, internal zip for easy decoration.

MENS	S	M	L	XL	XXL	3XL	5XL
1/2 CHEST	60	62	64	66	68	70	74
variations +/- 1 cm (guide only)							
KIDS	6	8	10	12	14	16	
1/2 CHEST	45	48	51	54	57	60	
variations +/- 1 cm (guide only)							



RIPSTOP track pant



PONGEE track pant



RIPSTOP track pant

1605 MENS Size: S-3XL+5XL **3605 KIDS** Size:4-16

100% polyester ripstop, with two side zipped pockets, elasticised waist with drawstring, jersey interlock lining and zippered leg opening with taffeta lining.

*Ripstop trackpants coordinates with Tasman Tracktop

MENS	S	M	L	XL	XXL	3XL	5XL
1/2 WAIST RELAXED	34	36.5	39	41.5	44	46.5	51.5
OUTSIDE LEG	102.5	104	105.5	107	108.5	110	113
variations +/- 1 cm (guide only)							
KIDS	4	6	8	10	12	14	16
1/2 WAIST RELAXED	24	26	28	30	32	34	36
OUTSIDE LEG	65	75	80	85	90	95	100
variations +/- 1 cm (guide only)							

PONGEE track pant

1600 MENS Size: S-3XL+5XL **3600 KIDS** Size:4-16

100% polyester Pongee (Chinese silk), with two side zipped pockets, elasticised waist with drawstring, jersey interlock lining and zippered leg opening with taffeta lining.

*Pongee trackpants coordinates with Eureka Tracktop

MENS	S	M	L	XL	XXL	3XL	5XL
1/2 WAIST RELAXED	34	36.5	39	41.5	44	46.5	51.5
OUTSIDE LEG	102.5	104	105.5	107	108.5	110	113
variations +/- 1 cm (guide only)							
KIDS	4	6	8	10	12	14	16
1/2 WAIST RELAXED	24	26	28	30	32	34	36
OUTSIDE LEG	65	75	80	85	90	95	100
variations +/- 1 cm (guide only)							

TRAINING short



SCHOOL ZIP short



TRAINING short

1606 MENS Size: S-3XL+5XL 3606 KIDS Size:4-16



black navy

TECHNICAL FEATURES

- Fabric Weight: 140gm
- Fabric: 92% polyester 8% spandex 4 way stretch

UNIQUE SELLING POINTS

- Elasticated waist with inner drawcord
- Side seam pockets
- Side splits leg opening

MENS	XS	S	M	L	XL	XXL	3XL	5XL
WAIST	32.5	35	37.5	40	42.5	45	47.5	52.5
INLEG LENGTH	15	15	15	15	15	15	15	15
variations +/- 1 cm (guide only)								
KIDS	4	6	8	10	12	14	16	
WAIST	26	28	30	32	34	36	38	
INLEG LENGTH	11	11	11	11	11	11	11	
variations +/- 1 cm (guide only)								

SCHOOL ZIP short

1607 MENS Size: S-3XL+5XL 3607 KIDS Size:4-16



black navy

TECHNICAL FEATURES

- Fabric Weight: 140gm
- Fabric: 92% polyester 8% spandex 4 way stretch

UNIQUE SELLING POINTS

- Elasticated waist with inner drawcord
- Side seam pockets with zip closure
- Side splits leg opening

MENS	XS	S	M	L	XL	XXL	3XL	5XL
WAIST	32.5	35	37.5	40	42.5	45	47.5	52.5
INLEG LENGTH	15	15	15	15	15	15	15	15
variations +/- 1 cm (guide only)								
KIDS	4	6	8	10	12	14	16	
WAIST	26	28	30	32	34	36	38	
INLEG LENGTH	11	11	11	11	11	11	11	
variations +/- 1 cm (guide only)								



RUGBY short

1603 MENS Size: XXS-7XL **3603 KIDS** Size:4-16

100% polyester twill.
Bar tacked at crotch seam.
elasticated waistband with
drawcord for a secure fit.

MENS	XXS	XS	S	M	L	XL	XXL	3XL	4XL	5XL	6XL	7XL
	28	30	32	34	36	38	40	42	44	46	48	50
1/2 WAIST RELAXED	32	34	36	38	40	42	44	46	48	50	52	54
OUTSIDE LEG	30.5	31.5	33	34	35.5	36.5	38	39	40.5	41.5	43	44
variations +/- 1 cm (guide only)												
KIDS	4	6	8	10	12	14	16					
1/2 WAIST RELAXED	26	27	28	29	30	31	32					
OUTSIDE LEG	26	27	28	29	30	31	32					
variations +/- 1 cm (guide only)												



charcoal* black navy royal (K) bottle red (M)

(M) = mens only (K) = kids only *Charcoal not available in size 4

SPORTS short



1601 MENS Size: S-3XL+5XL **3601 KIDS** Size:4-16

160gm 100% polyester **DRWEAR™** mini-waffle knit, with moisture removal technology, easy care fabric, elasticised waist with drawstring and two side pockets.

MENS	S	M	L	XL	XXL	3XL	5XL
1/2 WAIST RELAXED	34	36.5	39	41.5	44	46.5	51.5
OUTSIDE LEG LENGTH	53	54	55	56	57	58	60
variations +/- 1 cm (guide only)							
KIDS	4*	6	8	10	12	14	16
1/2 WAIST RELAXED	26	28	30	32	34	36	38
OUTSIDE LEG LENGTH	33	35	37	39	41	43	45
variations +/- 1 cm (guide only)							





black navy slate royal (K) maroon (K) bottle (K) red (K)

(K) = kids only

PONGEE short

1602 MENS Size: S-3XL+5XL **3602 KIDS** Size:4-16

100% polyester Pongee (Chinese silk) shorts, with one back zipped pocket and two side pockets.

MENS	S	M	L	XL	XXL	3XL	5XL
1/2 WAIST RELAXED	34	36.5	39	41.5	44	46.5	51.5
OUTSIDE LEG LENGTH	44	45	46	47	48	49	51
variations +/- 1 cm (guide only)							
KIDS	4	6	8	10	12	14	16
1/2 WAIST RELAXED	26	28	30	32	34	36	38
OUTSIDE LEG LENGTH	26	28	30	32	34	36	38
variations +/- 1 cm (guide only)							





BAG RANGE



TASMAN backpack

4000 BACKPACK

- Features:
- 600d polyester
 - no10. heavy duty zips
 - elasticised mesh pockets on both sides
 - padded shoulder straps
 - contour padded back
 - capacity: 28 litres
 - w: 31cm x h: 44.5cm x d: 20.5cm



black/ cyan black/ neon green black/ gold black/ red



black/ white bottle/ gold slate/ neon green slate/ neon orange



cyan/ neon green cyan/ black red/ white royal/ white



maroon/ white navy/ red navy/ sky navy/ white navy/ gold



solid navy solid black



black/ red



ID card holder



internal organiser



rubber feet

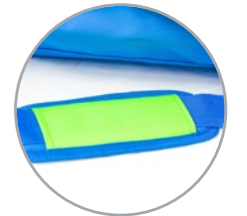




TASMAN sports bag

4001 SPORTS BAG

- Features:
- 600d polyester
 - no10. heavy duty zips
 - large side compartment with ventilation holes
 - elasticised mesh pocket on one side
 - w: 27.5cm x h: 31.5cm x d: 58cm
 - contrast padded shoulder strap
 - capacity: 50 litres



printable flat strap guard



ventilation holes



rubber feet

cyan/ neon green



black/ cyan

black/ neon green

black/ gold

black/ red

black/ white

slate/ neon orange



slate/ neon green

cyan/ black

navy/ sky

navy/ white

navy/ red

navy/ gold



bottle/ gold

maroon/ white

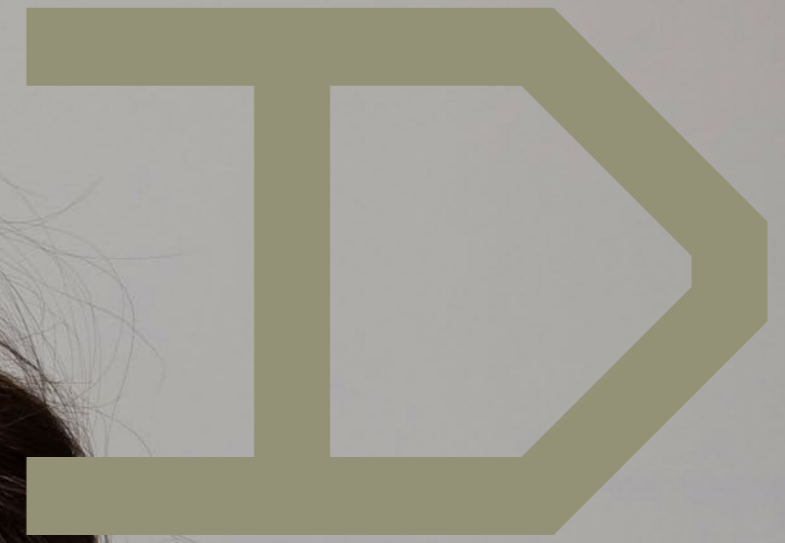
red/ white

royal/ white

solid black

solid navy





HOODIES

NEW



black/grey marle black/red black/kawa green black/electric purple



black/army green black/electric royal black/gold black/electric orange



navy/red navy/sky navy/gold navy/grey



royal/grey bottle/grey charcoal/black red/grey



MONASH hoodie



1530 MENS Size: XS-3XL+5XL + (7XL charcoal/black only) **3530 KIDS** Size: 4-16

TECHNICAL FEATURES

- Fabric Weight: 340gm
- Fabric: 80% Cotton 20% polyester brushed inner jersey knit fleece

UNIQUE SELLING POINTS

- Low pill high cotton content quality fabric
- Flat tie cord (men's only)
- Blank canvas to maximise logo and design space

MENS	XS	S	M	L	XL	XXL	3XL	5XL	7XL
1/2 CHEST	53.5	56	58.5	61	63.5	66	71	76	81
variations +/- 1 cm (guide only) 7XL slate/black only									

KIDS	4	6	8	10	12	14	16
1/2 CHEST	41	43	45	47	49	51	53
variations +/- 1 cm (guide only)							





black navy bottle



maroon red royal



charcoal marle grey marle



TORQUAY hoodie



1525 MENS Size: XS-3XL+5XL + (7XL black & navy only) **3525 KIDS** Size: 4-16

TECHNICAL FEATURES

- Fabric Weight: 340gm
- Fabric: 80% cotton 20% polyester
- Brushed inner jersey knit fleece

UNIQUE SELLING POINTS

- Low pill high cotton content quality fabric
- Flat tie cord (men's only)
- Blank canvas to maximise logo and design space

MENS	XS	S	M	L	XL	XXL	3XL	5XL	7XL
1/2 CHEST	53.5	56	58.5	61	63.5	66	71	76	81
variations +/- 1 cm (guide only)									
KIDS	4	6	8	10	12	14	16		
1/2 CHEST	41	43	45	47	49	51	53		
variations +/- 1 cm (guide only)									





black



charcoal marle



navy



QUEENSCLIFF hoodie



1528 MENS Size: XS-3XL+5XL + (7XL black & navy only) **3528 KIDS** Size: 4-16

TECHNICAL FEATURES

- Fabric Weight: 340gm
- Fabric: 80% cotton 20% polyester
- Brushed inner jersey knit fleece

UNIQUE SELLING POINTS

- Low pill high cotton content quality fabric
- Larger sizes available - Up to 5XL in all colours, 7XL in Navy & Black
- Flat tie cord (men's only)
- Blank canvas to maximise logo and design space

MENS	XS	S	M	L	XL	XXL	3XL	5XL	7XL
1/2 CHEST	53.5	56	58.5	61	63.5	66	71	76	81
variations +/- 1 cm (guide only)									
KIDS	4	6	8	10	12	14	16		
1/2 CHEST	41	43	45	47	49	51	53		
variations +/- 1 cm (guide only)									



CRUSADER hoodie



CRUSADER hoodie  POLYESTER

1527 MENS Size: XS-3XL+5XL + (7XL black & navy only) **3527 KIDS** Size: 4-16

TECHNICAL FEATURES

- Fabric Weight: 280gm
- Fabric: 100% polyester brushed inner jersey knit fleece
- 3-Piece hood

UNIQUE SELLING POINTS

- Light weight performance fabric for comfort and movement
- Shoe lace cord with metal eyelet (men's only)
- Blank canvas to maximise logo and design space
- Raglan Sleeve

MENS	XS	S	M	L	XL	XXL	3XL	5XL	7XL
1/2 CHEST	53.5	56	58.5	61	63.5	66	71	76	81
variations +/- 1 cm (guide only)									
KIDS	4	6	8	10	12	14	16		
1/2 CHEST	41	43	45	47	49	51	53		
variations +/- 1 cm (guide only)									





black/ kawa green/ white black/ electric purple/ white black/ electric royal/ white black/ white/ white/ ashe



black/ electric orange/ white black/ red/ white black/ red/ gold black/ ashe/ white



navy/ ashe/ white navy/ white/ ashe navy/ red/ gold red/ black/ white slate/ black/ white royal/ white/ ashe side view



HUXLEY hoodie

1509 MENS Size: XS-3XL+5XL **3509 KIDS** Size: 4-16

300gm blended 50% cotton 50% polyester brushed inner jersey knit fleece, low pill, with contrast panels and hood lining, hood stripe, front piping and flat tie cord (mens only).

MENS	XS	S	M	L	XL	XXL	3XL	5XL
1/2 CHEST	54.5	56	58.5	61	63.5	66	71	76
SHOULDER TO HEM	69	73	75	77	79	81	83	91
variations +/- 1 cm (guide only)								
KIDS	4	6	8	10	12	14	16	
1/2 CHEST	41	43	45	47	49	51	53	
SHOULDER TO HEM	53	55	57	60	62	64	66	
variations +/- 1 cm (guide only)								





black/ white

black/ red

black/ gold



black/ orange

red/ white

royal/ white



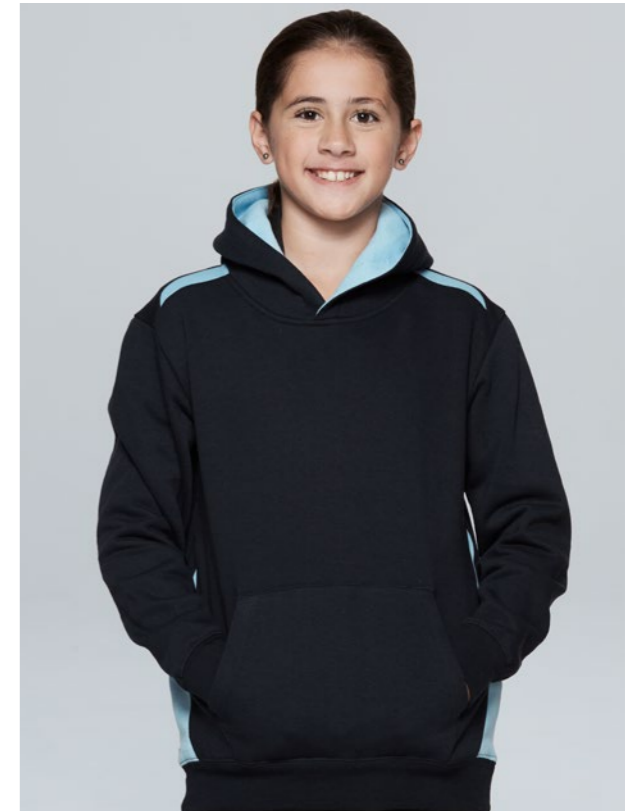
navy/ white

navy/ gold

navy/ sky

navy/ red

side



PATERSON hoodie

1506 MENS Size: XS-3XL+5XL **3506 KIDS** Size: 4-16

300gm blended 50% cotton 50% polyester brushed inner jersey knit fleece, low pill, with contrast panels and hood lining and flat tie cord (mens only).

MENS	XS	S	M	L	XL	XXL	3XL	5XL
1/2 CHEST	53.5	56	58.5	61	63.5	66	71	76
SHOULDER TO HEM	69	73	75	77	79	81	83	91
variations +/- 1 cm (guide only)								
KIDS	4	6	8	10	12	14	16	
1/2 CHEST	41	43	45	47	49	51	53	
SHOULDER TO HEM	53	55	57	60	62	64	66	
variations +/- 1 cm (guide only)								





JACKETS

AP OUTERWEAR

We have gone the 'extra mile' to bring you this range of top quality AP Outer Wear. To create this range, we've used only top quality fabrics combined with expert workmanship to bring these retail influenced styles.

What does "WP" "BP" mean?

Fabric manufacturers typically describe the waterproof breathability of fabrics using two numbers.

The first is in millimeters (mm) and is a measure of how waterproof a fabric is. In the case of a 5k or 5,000 mm fabric, if you put a square tube with inner dimensions of 2.5cm x 2.5cm over a piece of fabric, you could fill it with water to a height of 5,000 mm before water would begin to leak through. The higher the number, the more waterproof the fabric.

The second number is a measure of how breathable the fabric is - this is normally expressed in terms of how many grams (g) of water vapor can pass through a square meter (m²) of the fabric from the inside to the outside in a 24 hour period. In the case of a 5k (5,000g) fabric, this would be 5,000 grams. The higher the number, the more breathable the fabric is.

NEW



black



navy



ASPEN softshell jacket

1531 MENS Size: S-3XL+5XL+7XL **2531 LADIES** Size: 6-26 **3531 KIDS** Size: 4-16

TECHNICAL FEATURES

- Fabric Weight: 400gm
- Outer: 94% polyester/ 6% spandex
- Inner: 100% polyester bonded fleece
- 3 layer performance softshell
- Waterproof: 10000mm / Breathability: 10000mm
- Wind resistant

UNIQUE SELLING POINTS

- Double head (2 way) waterproof zipper
- Self fabric concealed hood with 100% polyester velour lining
- Adjustable hem with elastic cord & toggle
- Front & back side panel and front yoke with reflective tape piping

MENS	S	M	L	XL	XXL	3XL	5XL	7XL			
1/2 CHEST	54	56.5	59	61.5	64	66.5	71.5	76.5			
variations +/- 1 cm (guide only)											
LADIES	6	8	10	12	14	16	18	20	22	24	26
1/2 CHEST	45.5	48	50.5	53	55.5	58	60.5	63	65.5	69.5	73.5
variations +/- 1 cm (guide only)											
KIDS	4	6	8	10	12	14	16				
1/2 CHEST	37	40	43	46	49	52	55				
variations +/- 1 cm (guide only)											





SELWYN softshell jacket

1512 MENS Size: S-3XL+5XL (6-8XL black & navy only) **2512 LADIES** Size: 8-22 (24-26 black & navy only) **3512 KIDS** Size: 6-16

TECHNICAL FEATURES

- Fabric Weight: 320gm
- Fabric: Outer 95% polyester 5% elastane
- Inner 100% polyester bonded fleece
- 2 layer performance softshell

UNIQUE SELLING POINTS

- Light weight water repellent and wind resistant
- 2 side zip pockets
- Shaped back tail for modern fit

MENS	S	M	L	XL	2XL	3XL	5XL	6XL*	7XL*	8XL*
1/2 CHEST	54	56.5	59	61.5	64	66.5	71.5	75	78.5	82

variations +/- 1 cm (guide only)

LADIES	8	10	12	14	16	18	20	22	24*	26*
1/2 CHEST	48	50.5	53	55.5	58	60.5	63	65.5	69.5	73.5

variations +/- 1 cm (guide only)

KIDS	6	8	10	12	14	16
1/2 CHEST	40	43	46	49	52	55

variations +/- 1 cm (guide only)



NEW



black

navy

slate



STYLE: 9900 INTERCHANGEABLE ZIP PULLERS
black, cyan, gold, green, navy, orange, purple, red, royal, slate, yellow & pink.



SELWYN softshell vest

1529 MENS Size: S-3XL+5XL+7XL **2529 LADIES** Size: 8-26 **3529 KIDS** Size: 4-16

TECHNICAL FEATURES

- Fabric Weight: 320gm
- Outer: 95% polyester 5% elastane
- Inner: 100% polyester bonded fleece
- 2 layer performance softshell

UNIQUE SELLING POINTS

- Medium weight water repellent and wind resistant
- 2 side zip pockets
- Shaped back tailed hem for modern fit

MENS	S	M	L	XL	2XL	3XL	5XL	7XL
1/2 CHEST	54	56.5	59	61.5	64	66.5	71.5	78.5

variations +/- 1 cm (guide only)

LADIES	8	10	12	14	16	18	20	22	24	26
1/2 CHEST	48	50.5	53	55.5	58	60.5	63	65.5	69.5	73.5

variations +/- 1 cm (guide only)

KIDS	4	6	8	10	12	14	16
1/2 CHEST	37	40	43	46	49	52	55

variations +/- 1 cm (guide only)





OLYMPUS softshell jacket

1513 MENS Size: S-3XL+5XL (6-8XL black & navy only) **2513 LADIES** Size: 8-22 (24-26 black & navy only) **3513 KIDS** Size: 6-16

TECHNICAL FEATURES

- Fabric Weight: 320gm
- Outer: 95% polyester 5% elastane
- Inner: 100% polyester bonded fleece
- 3 layer performance softshell
- Waterproof: 3000mm / Breathability: 3000mm

UNIQUE SELLING POINTS

- Multipurpose water repellent and wind resistant performance jacket
- 2 side zip pockets and 1 chest zip pocket
- Waterproof zips & concealed seam sealed water proof hood
- Shaped back tail for modern fit

MENS	S	M	L	XL	2XL	3XL	5XL	6XL*	7XL*	8XL*
1/2 CHEST	54	56.5	59	61.5	64	66.5	71.5	75	78.5	82
variations +/- 1 cm (guide only)										
LADIES	8	10	12	14	16	18	20	22	24*	26*
1/2 CHEST	48	50.5	53	55.5	58	60.5	63	65.5	69.5	73.5
variations +/- 1 cm (guide only)										
KIDS	6	8	10	12	14	16				
1/2 CHEST	40	43	46	49	52	55				
variations +/- 1 cm (guide only)										





OLYMPUS softshell vest

1515 MENS Size: S-3XL+5XL (6-8XL black & navy only) **2515 LADIES** Size: 8-22 (24-26 black & navy only)

TECHNICAL FEATURES

- Fabric Weight: 320gm
- Outer: 95% polyester 5% elastane
- Inner: 100% polyester bonded fleece
- 3 layer performance softshell
- Waterproof: 3000mm / Breathability: 3000mm

UNIQUE SELLING POINTS

- Multipurpose water repellent and wind resistant performance vest
- 2 side zip pockets and 1 chest zip pocket
- Shaped back tail for modern fit

MENS	S	M	L	XL	2XL	3XL	5XL	6XL*	7XL*	8XL*
1/2 CHEST	54	56.5	59	61.5	64	66.5	71.5	75	78.5	82
variations +/- 1 cm (guide only)										
LADIES	8	10	12	14	16	18	20	22	24*	26*
1/2 CHEST	48	50.5	53	55.5	58	60.5	63	65.5	69.5	73.5
variations +/- 1 cm (guide only)										





black

navy



STYLE: 9900 INTERCHANGEABLE ZIP PULLERS black, cyan, gold, green, navy, orange, purple, red, royal, slate, yellow & pink.

BULLER puffer jacket

1522 MENS Size: S-3XL+5XL **2522 LADIES** Size: 8-22 **3522 KIDS** Size: 4-16

TECHNICAL FEATURES

- Outer: 380T 100% nylon
- Inner: 100% polyester lightweight fill
- Internal zipper access for decoration

UNIQUE SELLING POINTS

- 2 front welt pockets
- Elasticated cuffs for comfort
- Zip front closure
- High collar for warmth and comfort

MENS	S	M	L	XL	2XL	3XL	5XL
1/2 CHEST	58.5	61	63.5	66	68.5	72	77

variations +/- 1 cm (guide only)

LADIES	8	10	12	14	16	18	20	22
1/2 CHEST	48	50.5	53	55.5	58	60.5	63	65.5

variations +/- 1 cm (guide only)

KIDS	4	6	8	10	12	14	16
1/2 CHEST	32	35	38	41	44	47	50

variations +/- 1 cm (guide only)





black

navy



STYLE: 9900 INTERCHANGEABLE ZIP PULLERS black, cyan, gold, green, navy, orange, purple, red, royal, slate, yellow & pink.

SNOWY puffer vest

1523 MENS Size: S-3XL+5XL **2523 LADIES** Size: 8-22 **3523 KIDS** Size: 4-16

TECHNICAL FEATURES

- Outer: 380T 100% nylon
- Inner: 100% polyester lightweight fill
- Internal zipper access for decoration

UNIQUE SELLING POINTS

- 2 front welt pockets
- Elasticated armholes for increase freedom of movement
- Zip front closure
- High collar for warmth and comfort
- Shaped back tail for modern fit

MENS	S	M	L	XL	2XL	3XL	5XL
1/2 CHEST	58.5	61	63.5	66	68.5	72	77
variations +/- 1 cm (guide only)							

LADIES	8	10	12	14	16	18	20	22
1/2 CHEST	48	50.5	53	55.5	58	60.5	63	65.5
variations +/- 1 cm (guide only)								

KIDS	4	6	8	10	12	14	16
1/2 CHEST	32	35	38	41	44	47	50
variations +/- 1 cm (guide only)							





black/grey

navy/grey

red/grey

SHEFFIELD jacket

1516 MENS Size: S-3XL+5XL **2516 LADIES** Size: 8-22

FABRIC:

Outer 100% polyester twill with TPU* membrane
 Inner 220gm 100% polyester brushed fleece
 Waterproof: 5000mm / Breathability: 5000mm

FEATURES:

- Seam sealed
- Water sealed chest zip pocket
- 2 side zip pockets
- Detachable hood with peak
- Curved back hem
- Extra body length with twin head main zipper
- Adjustable elasticated cuff
- Internal zipper access for decoration

MENS	S	M	L	XL	2XL	3XL	5XL
1/2 CHEST	57.5	60	62.5	65	67.5	70	75

variations +/- 1 cm (guide only)

LADIES	8	10	12	14	16	18	20	22
1/2 CHEST	53	55.5	58	60.5	63	65.5	68	70.5

variations +/- 1 cm (guide only)





black/grey

grey/black

blue/black

KINGSTON jacket

1517 MENS Size: S-3XL+5XL **2517 LADIES** Size: 8-22

FABRIC:

Outer 150gm 100% polyester twill with membrane
 Inner 100% taffeta lining with polyester padding
 Waterproof: 5000mm / Breathability: 5000mm

FEATURES:

Heavy padded
 2 side and 2 inside chest pockets
 Detachable hood with peak
 Extra body length with twin head main zipper
 Adjustable elasticated cuff
 Internal zipper access for decoration

MENS	S	M	L	XL	2XL	3XL	5XL
1/2 CHEST	62.5	65	67.5	70	72.5	75	80
variations +/- 1 cm (guide only)							

LADIES	8	10	12	14	16	18	20	22
1/2 CHEST	55	57	59.5	62	64.5	67	69.5	72
variations +/- 1 cm (guide only)								





black/grey

black/blue

black/red

NAPIER jacket

1518 MENS Size: S-3XL+5XL **2518 LADIES** Size: 8-22

FABRIC:

Outer 175gm 100% polyester microfibre ripstop
 Inner Taffeta light weight padded lining
 Waterproof: 5000mm / Breathability: 5000mm

FEATURES:

6 pockets - 1 zip chest, 2 zip side, 2 internal zip and 1 concealed zip sleeve pocket
 Detachable hood with small peak
 Extra body length with twin head main zipper
 Adjustable elasticated cuff
 Internal zipper access for decoration.

MENS	S	M	L	XL	2XL	3XL	5XL
1/2 CHEST	60	62.5	65	67.5	70	72.5	77.5

variations +/- 1 cm (guide only)

LADIES	8	10	12	14	16	18	20	22
1/2 CHEST	54	56	58	60.5	63	65.5	68	70.5

variations +/- 1 cm (guide only)





black

navy

PARKLANDS jacket

1519 MENS Size: S-3XL+5XL **2519 LADIES** Size: 8-22

FABRIC:

Outer 135gm 100% polyester satin finish
 Inner 100% taffeta lining with polyester padding
 Waterproof: 5000mm / Breathability: 5000mm

FEATURES:

2 side pockets with an internal pocket
 Lightly padded detachable hood with peak
 Extra body length with twin head main zipper
 Contrast printed tweed storm flap
 Adjustable cuff
 Internal zipper access for decoration.

MENS	S	M	L	XL	2XL	3XL	5XL
1/2 CHEST	56	58.5	61	63.5	66	68.5	73.5

variations +/- 1 cm (guide only)

LADIES	8	10	12	14	16	18	20	22
1/2 CHEST	50.5	53	55.5	58	60.5	63	65.5	68

variations +/- 1 cm (guide only)





STOCKS LAST
 RUN OUT
 THEM



BUFFALO jacket

1524 MENS Size: S-3XL+5XL **3524 KIDS** Size: 6-16

FABRIC:

Outer 110gm 100% polyester doobby pongee
 Waterproof: 3000mm / Breathability: 3000mm

FEATURES:

- Water repellent and wind resistant finish
- Reflective tape
- 2 external zip pockets
- Elasticated cuff
- Stand up collar with concealable hood
- Chin guard

MENS	S	M	L	XL	2XL	3XL	5XL
1/2 CHEST	61.5	64	66.5	69	71.5	74	79

variations +/- 1 cm (guide only)

KIDS	6	8	10	12	14	16
1/2 CHEST	44	46	48	50	53	56

variations +/- 1 cm (guide only)



2902L GRANGE

1902L GRANGE

BUSINESS



KINGSWOOD mens

1910S short sleeve 1910L long sleeve

SIZES: XXS - 5XL+7XL

Fashionable and comfortable with a stylish cut, your every day go-to shirt.
65% polyester/ 35% cotton with anti pill treatment.



Black



White

SIZE	XXS	XS	S	M	L	XL	XXL	3XL	4XL	5XL	7XL
NECK	37	39	40	42	43	45	46	48	50	52	57
CHEST	50.5	53	55.5	58	60.5	63	65.5	69.5	73.5	77.5	85.5

variations +/- 1 cm (guide only)





KINGSWOOD ladies

2910S short sleeve 2910L long sleeve 2910T 3/4 sleeve

SIZES: 4-26

With a stylish feminine cut, these lightweight shirts are easy care and quick dry with almost zero maintenance. 65% polyester/ 35% cotton with anti pill treatment.

SIZE	4	6	8	10	12	14	16	18	20	22	24	26
CHEST	43	45.5	48	50.5	53	55.5	58	61.5	65	68.5	72	75.5

variations +/- 1 cm (guide only)



Black



White

AP Business



BRIGHTON mens

1909S short sleeve 1909L long sleeve

SIZES: XXS - 5XL

Our classic cut cotton rich shirt has a fashionable check design. Featuring a smaller subtle hounds tooth check inside the collar, placket and under the cuff as well as a practical left chest pocket.
60% cotton/40% polyester easy care fabric

SIZE	XXS	XS	S	M	L	XL	2XL	3XL	4XL	5XL
NECK	37	39	40	42	43	45	46	48	50	52
CHEST	50.5	53	55.5	58	60.5	63	65.5	69.5	73.5	77.5

variations +/- 1 cm (guide only)



French Blue



Claret Red



Black





BRIGHTON ladies

2909S short sleeve 2909L long sleeve 2909T 3/4 sleeve

SIZES: 4-26

This cotton rich fabric has a small subtle hounds tooth check inside the collar. On the long sleeve, we have included the same small check on the under cuff and both the ¾ sleeve and the short sleeve feature a trendy inverted V on the sleeve for wearing as is or folding up. Along with all of the ladies shirts in the AP Business range, there is a 'Magic Button' on the inside placket to prevent the shirts from gaping at the bust.

60% cotton/40% polyester easy care fabric.

SIZE	4	6	8	10	12	14	16	18	20	22	24	26
CHEST	43	45.5	48	50.5	53	55.5	58	61.5	65	68.5	72	75.5

variations +/- 1 cm (guide only)



French Blue



Claret Red



Black





DEVONPORT mens

1908S short sleeve 1908L long sleeve

SIZES: XXS - 5XL

A classic cut shirt with double turned top stitch front placket. The sleeve cuff has a tonal contrast under cuff with a matching inner neckband stand detail.
60% polyester/40% cotton with anti pill treatment.



Mid Blue/Sky



Charcoal/Silver

SIZE	XXS	XS	S	M	L	XL	2XL	3XL	4XL	5XL
NECK	37	39	40	42	43	45	46	48	50	52
CHEST	50.5	53	55.5	58	60.5	63	65.5	69.5	73.5	77.5

variations +/- 1 cm (guide only)





DEVONPORT ladies

2908S short sleeve 2908L long sleeve 2908T 3/4 sleeve

SIZES: 4-26

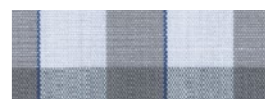
Edge stitched double turned placket. Contrast edging on short sleeve and inner collar stand finishes a classic style. A slim line fit with bust and waist darting front and back. As with all of the ladies shirts in this range, there is a 'Magic Button' on the inside placket to prevent the shirt from gaping at the bust.
60% polyester/40% cotton with anti pill treatment.

SIZE	4	6	8	10	12	14	16	18	20	22	24	26
CHEST	43	45.5	48	50.5	53	55.5	58	61.5	65	68.5	72	75.5

variations +/- 1 cm (guide only)



Mid Blue/Sky



Charcoal/Silver



EPSOM mens

1907S short sleeve 1907L long sleeve

SIZES: XXS - 5XL

Edge stitched placket with tonal tape trim on under button placket and long sleeve cuff. A fine tonal inside collar neck trim which finishes the presentation, pocket with V detailed stitching. 65% polyester/35% cotton with anti pill treatment.

SIZE	XXS	XS	S	M	L	XL	2XL	3XL	4XL	5XL
NECK	37	39	40	42	43	45	46	48	50	52
CHEST	50.5	53	55.5	58	60.5	63	65.5	69.5	73.5	77.5

variations +/- 1 cm (guide only)



Slate



Emerald



Mauve

AP Business



EPSOM ladies

2907S short sleeve 2907L long sleeve 2907T 3/4 sleeve

SIZES: 4-26

Edge stitched placket with tonal tape trim on under button placket and long sleeve cuff. A fine tonal inside collar neck trim which finishes the presentation. A classic fit with bust and waist darting front and back. The short and three quarter sleeve have top stitched cuffs with tonal piping inserts. As with all of the ladies shirts in this range, there is a 'Magic Button' on the inside placket to prevent the shirt from gaping at the bust.

65% polyester/35% cotton with anti pill treatment.

SIZE	4	6	8	10	12	14	16	18	20	22	24	26
CHEST	43	45.5	48	50.5	53	55.5	58	61.5	65	68.5	72	75.5

variations +/- 1 cm (guide only)



Slate

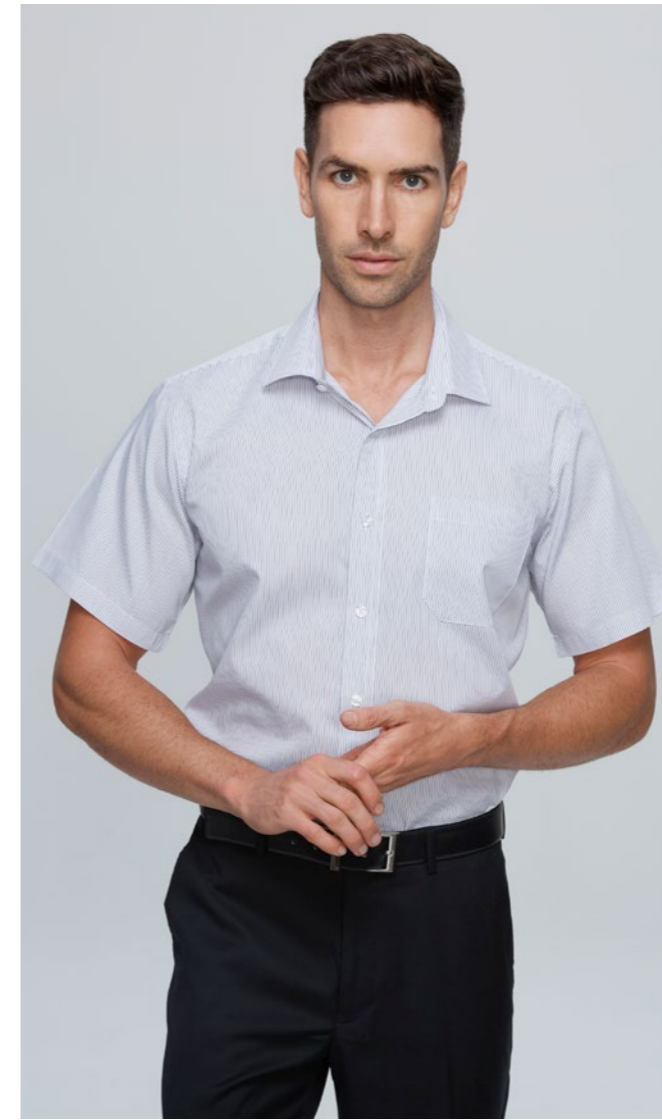


Emerald



Mauve





HENLEY mens

1900S short sleeve 1900L long sleeve

SIZES: XXS - 5XL

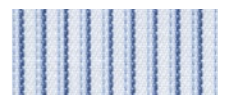
A superbly crafted striped shirt featuring a top stitched pleated front placket and collar. The cuffs are cut on an opposing direction for contrast with an angled finish. 65% polyester/35% cotton with anti-pill treatment.

SIZE	XXS	XS	S	M	L	XL	2XL	3XL	4XL	5XL
NECK	37	39	40	42	43	45	46	48	50	52
CHEST	50.5	53	55.5	58	60.5	63	65.5	69.5	73.5	77.5

variations +/- 1 cm (guide only)



Black/Silver



White/Navy



White/Purple



AP Business



HENLEY ladies

2900S short sleeve 2900T 3/4 sleeve

SIZES: 4-26

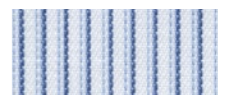
Edge stitching finishes a double turn placket and collar. Sleeve cuffs are cut on an opposing direction to give a complementary contrast. Bust and waist darts create a slimline fit. Available in short and 3/4 sleeve lengths. As with all of the ladies shirts in this range, there is a 'Magic Button' on the inside placket to prevent the shirt from gaping at the bust. 65% polyester/35% cotton with anti-pill treatment.

SIZE	4	6	8	10	12	14	16	18	20	22	24	26
CHEST	43	45.5	48	50.5	53	55.5	58	61.5	65	68.5	72	75.5

variations +/- 1 cm (guide only)



Black/Silver



White/Navy



White/Purple



TOORAK mens

1901S short sleeve 1901L long sleeve

SIZES: XXS - 5XL

This mini-check shirt has top stitch pleated placket cut on the bias for added effect. A standard fit shirt with back yoke, side comfort pleats and pocket. 65% polyester/35% cotton with anti-pilling treatment.



Black/White



Purple/White



Navy/White

SIZE	XXS	XS	S	M	L	XL	2XL	3XL	4XL	5XL
NECK	37	39	40	42	43	45	46	48	50	52
CHEST	50.5	53	55.5	58	60.5	63	65.5	69.5	73.5	77.5

variations +/- 1 cm (guide only)





TOORAK ladies

2901S short sleeve 2901T 3/4 sleeve

SIZES: 4-26

This smart mini check has a bias cut button placket with a hidden 'Magic Button' and top stitching on the placket and cuff. The Toorak lady comes in both 3/4 and short sleeves. 65% polyester/35% cotton with anti pill treatment.

SIZE	4	6	8	10	12	14	16	18	20	22	24	26
CHEST	43	45.5	48	50.5	53	55.5	58	61.5	65	68.5	72	75.5

variations +/- 1 cm (guide only)



Black/White



Purple/White



Navy/White



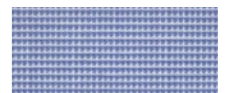


GRANGE mens

1902S short sleeve 1902L long sleeve

SIZES: XXS - 5XL

Available in three "micro-check" colours and two sleeve lengths, this shirt features a doubled turned placket with an angle edge on the long sleeve cuffs and back yoke with side comfort pleats. 65% polyester/35% cotton with anti-pilling treatment.



Mid Blue



Shadow Grey



Mauve

SIZE	XXS	XS	S	M	L	XL	2XL	3XL	4XL	5XL
NECK	37	39	40	42	43	45	46	48	50	52
CHEST	50.5	53	55.5	58	60.5	63	65.5	69.5	73.5	77.5

variations +/- 1 cm (guide only)





GRANGE ladies

2902S short sleeve 2902T 3/4 sleeve

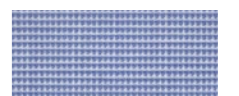
SIZES: 4-26

The "Chesterfield" placket with 'Magic Button' has a bias piping insert as well as sleeve cuff seams. The short sleeve models a small buttoned finish whilst the 3/4 has a V opened cuff. A feminine fit is created with bust and waist darts.

65% polyester/35% cotton with anti pill treatment.

SIZE	4	6	8	10	12	14	16	18	20	22	24	26
CHEST	43	45.5	48	50.5	53	55.5	58	61.5	65	68.5	72	75.5

variations +/- 1 cm (guide only)



Mid Blue



Shadow Grey



Mauve





MOSMAN mens

1903S short sleeve 1903L long sleeve

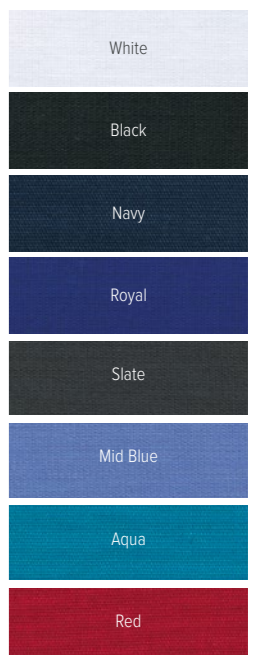
SIZES: XXS - 5XL

The Mosman comes in eight fashionable colours with elastane for added comfort. The placket is double turned and edge stitched. The sleeves are made modern with a curved cuff. The mens standard fit shirt has a back yoke with side comfort pleats and a rounded pocket.

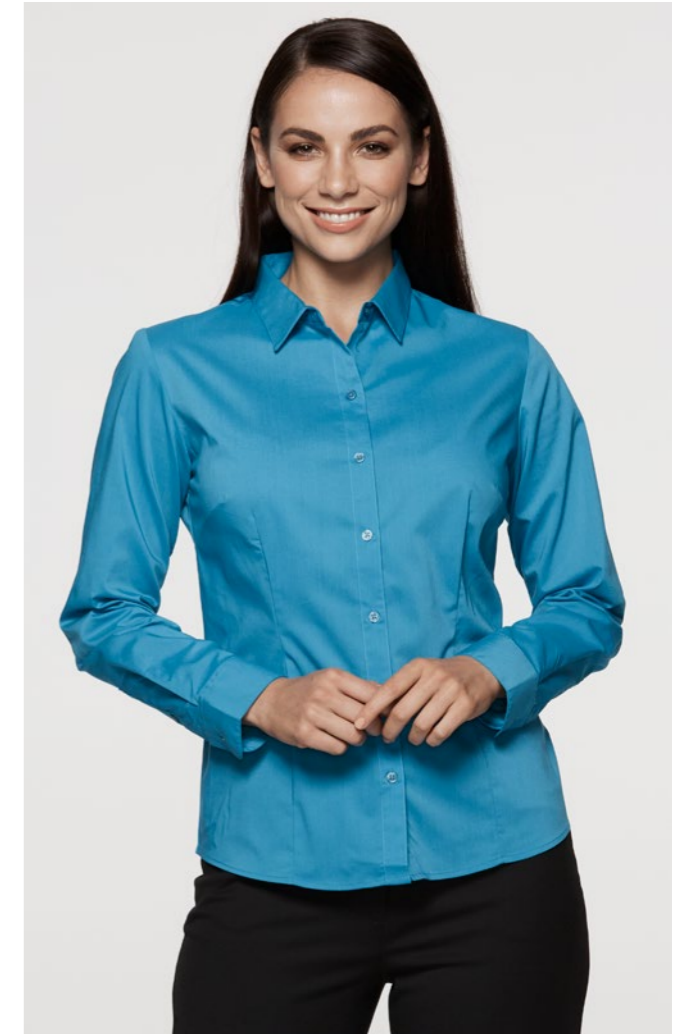
70% polyester/27% cotton/3% elastane with anti-pilling treatment.

SIZE	XXS	XS	S	M	L	XL	2XL	3XL	4XL	5XL
NECK	37	39	40	42	43	45	46	48	50	52
CHEST	50.5	53	55.5	58	60.5	63	65.5	69.5	73.5	77.5

variations +/- 1 cm (guide only)



AP Business



MOSMAN ladies

2903S short sleeve 2903L long sleeve 2903T 3/4 sleeve

SIZES: 4-26

The Mosman comes in eight fashionable colours with elastane for added comfort. The placket is double turned and edge stitched. The sleeves have a modern twist with a curved cuff. The ladies shirt hides a 'Magic Button'.

70% polyester/27% cotton/ 3% elastane with anti-pilling treatment.

SIZE	4	6	8	10	12	14	16	18	20	22	24	26
CHEST	43	45.5	48	50.5	53	55.5	58	61.5	65	68.5	72	75.5

variations +/- 1 cm (guide only)





BELAIR mens

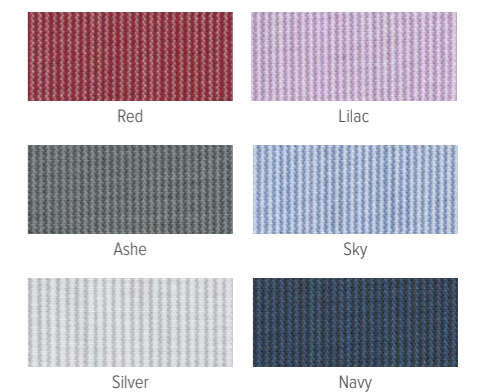
1905S short sleeve 1905L long sleeve

SIZES: XXS - 5XL

This contemporary styled mens shirt has been created using anti-pilling 65% polyester/35% cotton. Featuring a double turned clean edge placket, a top stitched collar and cuffs and an angled edge corner on the cuff and the pocket.

SIZE	XXS	XS	S	M	L	XL	2XL	3XL	4XL	5XL
NECK	37	39	40	42	43	45	46	48	50	52
CHEST	50.5	53	55.5	58	60.5	63	65.5	69.5	73.5	77.5

variations +/- 1 cm (guide only)





BELAIR ladies

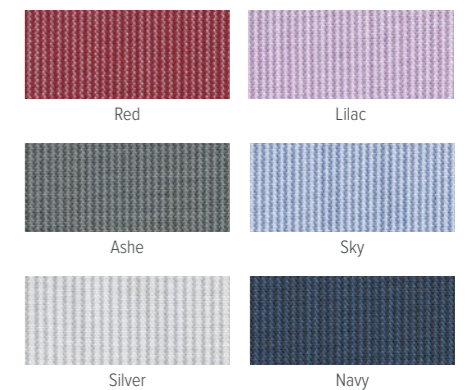
2905S short sleeve 2905T 3/4 sleeve

SIZES: 4-26

Below the doubled turned placket there is a hidden 'Magic Button' highlighting a Princess line front and back cut for a feminine flattering fit, complete with bias cut cuffs and edge stitched collar.
65% polyester/35% cotton with anti-pilling treatment.

SIZE	4	6	8	10	12	14	16	18	20	22	24	26
CHEST	43	45.5	48	50.5	53	55.5	58	61.5	65	68.5	72	75.5

variations +/- 1 cm (guide only)





WHILE STOCKS LAST
RUN OUT

AP Business



WHILE STOCKS LAST
RUN OUT

BAYVIEW mens

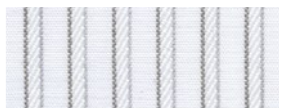
1906S short sleeve 19060L long sleeve

SIZES: XXS - 5XL

Woven corded twill stripe fabric features an angled arrow head finish at the back of the collar. Two sleeve lengths are available, with a pleated bias cut placket contrasting cuff on the long sleeve. 65% polyester/35% cotton with an anti-pilling treatment.

SIZE	XXS	XS	S	M	L	XL	2XL	3XL	4XL	5XL
NECK	37	39	40	42	43	45	46	48	50	52
CHEST	50.5	53	55.5	58	60.5	63	65.5	69.5	73.5	77.5

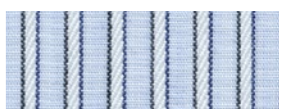
variations +/- 1 cm (guide only)



White/Silver



White/Pink



White/Sky



BAYVIEW ladies

2906S short sleeve 2906T 3/4 sleeve

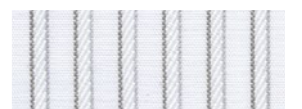
SIZES: 4-26

Featuring bust darts, slimming front and back waist darts, a 'Magic Button' to prevent gaping and bias cut cuff sleeves. The varied width bias cuff has a centre split and the collar offers a bias cut forming an angled arrow head finish.

65% polyester/35% cotton with anti-pilling treatment.

SIZE	4	6	8	10	12	14	16	18	20	22	24	26
CHEST	43	45.5	48	50.5	53	55.5	58	61.5	65	68.5	72	75.5

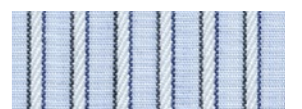
variations +/- 1 cm (guide only)



White/Silver



White/Pink



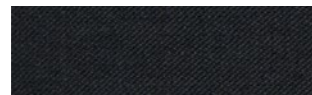
White/Sky

FLAT FRONT pant

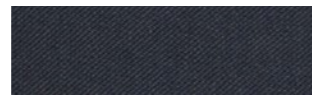


WHILE STOCKS LAST
RUN OUT

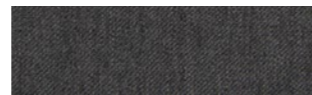
AP Business



Black



Navy



Charcoal

PLEATED FRONT pant



WHILE STOCKS LAST
RUN OUT

MENS pants

1800 flat front 1801 pleated

The classic Flat Front cut mens pant features a flat front to make your silhouette appear more smooth and straight. In flat front pants, the material lies flat and should be worn on the hips but they do have to fit you perfectly.
65% polyester/35% viscose

Pleats are creases on the front of the pants where the material is folded and sewed before it is attached to the waistband. The pleated pants are worn on the waist, just above your hip bone, which means pleated pants have a higher rise making them more generous in the middle. They will give you more freedom of movement and you will feel more comfortable.
65% polyester/35% viscose

WAIST CM	72R	77R	82R	87R	92R	97R	102R	107R	112R	117R	122R	127R
INSIDE LEG CM	81	81	81	82	82	83	83	83	83	83	83	83

FLAT FRONT pant



CLASSIC ladies skirt



AP Business

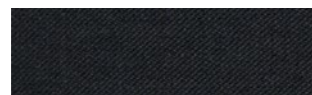
LADIES pants & skirt

SIZES: 4-26

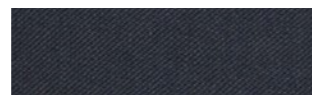
2800 classic pant **2802 classic knee length skirt**

Our tailored Classic Lady Pant has elastane for that extra comfort and features a flat front to make your silhouette appear more flattering, smoother and straighter. To maintain a smart and professional look, our mid-waist Pant has a front button closure and constructed waist with belt loops and two front square pockets.
65% polyester/33% viscose/2% elastane

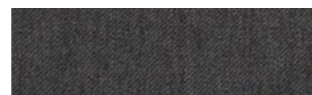
Our stylish fully lined tailored knee length skirt is made of 65% polyester for durability, 33% viscose for feel and 2% elastane for stretch and comfort. The lining fabric also has elastane making it comfortable to wear. Two front square cut welt pockets have been added to this corporate essential. Both the pant and the skirt can be co-ordinated to enhance the wearers option. Features a 'Magic Button' at the back for comfort.
65% polyester/33% viscose/2% elastane



Black



Navy



Charcoal

SIZE	4	6	8	10	12	14	16	18	20	22	24	26
TO FIT WAIST CM	58.5	61	66	71	76	81	86	91	96	101	106	111
TO FIT HIP CM	86.5	89	94	99	104	109	114	119	124	129	134	139

HOW TO measure



STEP 1

choose your favourite fitting shirt and grab a tape measure or ruler.

tip: don't use a polo, tee or singlet to measure with because they stretch more than a woven shirt does.

STEP 2

lay it down on a flat surface with the arms extended and smooth it flat.

tip: make sure no-one is wearing it.

STEP 3

measure down 2.5cm

from where the arm is sewn onto the body, give yourself a 'mark'.

tip: don't use a pen or marker, just make a light indentation in the fabric with your fingernail.

STEP 4

half chest measurement

Use this 'mark' you have just made and then measure across the front of the shirt from seam to seam.

tip: only measure the front.

STEP 5

refer to sizing tables in this catalogue or Online www.aussiepacific.com.au to match your half chest measurement to the Sizing Table.

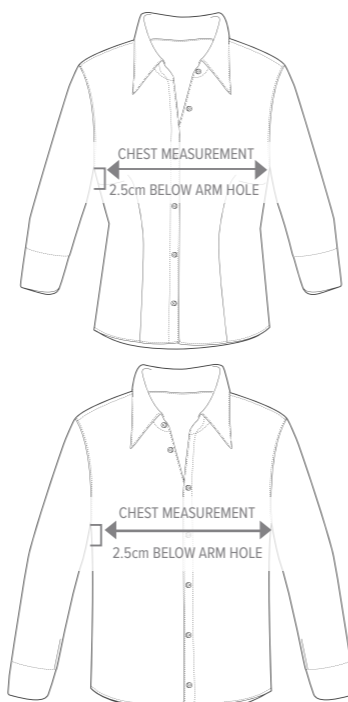
tip: do the measure up more than once in case you misread the numbers.

STEP 6

compare and consider

If your half chest measurement is 59cm then go to the shirt style you are considering and determine where 59 sits on the size chart.

tip: If you come in at 59cm, then consider going to an L at 60.5cm



VARIATIONS +/- 1cm - 1/2 CHEST MEASURE



CORPORATE RESPONSIBILITY

Aussie Pacific takes and considers the issue of social responsibility very seriously.

Corporate Social Responsibility (CSR) is a form of corporate self regulation integrated into a business model. CSR is also known as corporate conscience, social performance or sustainable responsible business.

Aussie Pacific offers innovative products and services while conserving, protecting and enhancing resources. To do this, Aussie Pacific's CSR Policy functions as a built in self regulating mechanism to monitor and ensure an active compliance within the spirit of the law and also ethical standards.

The goal of the Aussie Pacific CSR is to

embrace and enhance responsibility for the company's actions and to encourage a positive impact through our activities on the environment, our consumers, our employee communities, our stakeholders and our valued clients.

CSR is a non-binding principle that has received status in relation to both private and corporate sectors particularly in relation to workers conditions and the use of under age or child labour.

Our objective is to provide a set of requirements that when effectively implemented provides full confidence that we consistently provide goods and services that

meet your ethical needs and quality expectations and comply with all necessary regulations both in China and Australia. The factory falls under the ISO (ISO:9001) umbrella which is an international standard that gives requirement for an organisation's quality management system. Aussie Pacific does this in well managed factories. There is no forced, under age or child labour used in the manufacture of these retail quality garments. Workers rights and entitlements are also at the fore front as you would expect because Aussie Pacific is an Australian owned and operated company.

AP Business MAGIC button

When modesty is important, we've got you covered.

No more gaping plackets with our Magic Button. This button is cleverly hidden in the placket to make sure your modesty is your business.





DYE SUB

For information about
our Dye Sublimation
please visit:

Australia

aussiepacific.com.au

New Zealand

aussiepacific.co.nz

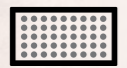


POLO standard

TEE standard

SINGLET standard

Performance Fabrics



Micromesh

100% polyester 165gsm, micro mesh is the latest addition of AP sports fabrics. The tiny punctures in the fabric promote ventilation, keeping you cool and dry.



Interlock

100% polyester Interlock is a tight knit fabric that is extremely smooth, firm and very absorbent. It has a great printable surface and is ideal for tops and shorts.



Poly/Elastane

85% polyester/ 15% elastane is a two-way stretch functional fabric that forms to the body to give you a comfortable and firm fit. This mix is perfect for rugby or league, for netball dresses and cycling jerseys or any use requiring a form fitting garment.



Mini Waffle

100% polyester 160gsm, the mini waffle fabric forms the backbone of the Aussie Pacific stock range as a proven fabric in the market for its durability and quick drying properties. It is ideal for schools, clubs and corporate use.



AP Standard Dye Sub Garments

Fully customised to suit your needs

Dye Sublimation is a process for printing designed themes by injecting colour and imagination into fabric. Chances are you have already got, or seen, sublimated fabrics. Industries such as sports, events and fashion rely heavily on this particular style.

Not creative? That's okay! It's easy to approach trained professionals who will use their expertise to get your unique design out of your head and into fabric. Alternatively, jump online and try design your own dye sublimated apparel at www.aussiepacific.com.au, then take your design to a professional and we will custom make your garment for a minimum of only 10 pieces.

Sounds pretty easy, right?

With Dye Sublimation (referred to as Dye Sub) the graphics are computer generated and transferred by printing to dye sublimated paper using specialised inks which are then transferred through heat and pressure into the fabric to give you a unique piece of clothing with the image or pattern embedded forever.

The image can be all over from seam to seam, will not fade, crack or fall off. These garments are made in our China factory using the latest technology dye sub printers and heat presses. Dye Sub can only be done successfully on 100% Polyester fabrics which especially suits the Aussie Pacific fabrics.



CROSS FIT
SINGLET

BASKETBALL
SINGLET

RUGBY
JERSEY

AFL
SINGLET

SOCCER
JERSEY

NETBALL
JERSEY

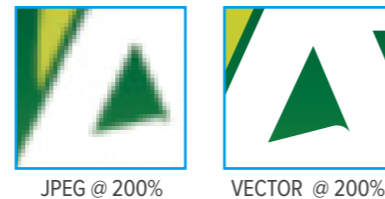


SUBLIMATION

What you need to know before sending artwork.

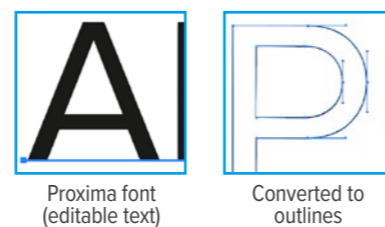
1. Provide a high resolution file

Vector File (line art) is the most common file as it is easy to manipulate and make variations if necessary. For images a Hi Resolution file with a minimum of 300DPI. Explanation for Vector and Raster Files are outlined below



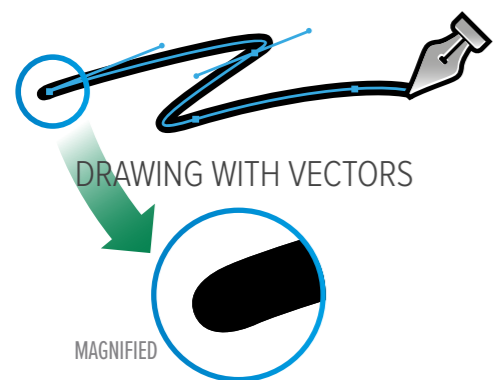
2. Create all text to outlines

With numerous text font styles available and to ensure we print the correct style to suit your needs it is best to create text to outlines.



3. Choose your colourway

We use PMS (Pantone Matching System) colours as a guide only. For colour matching we strongly suggest purchasing a sample.



VECTOR

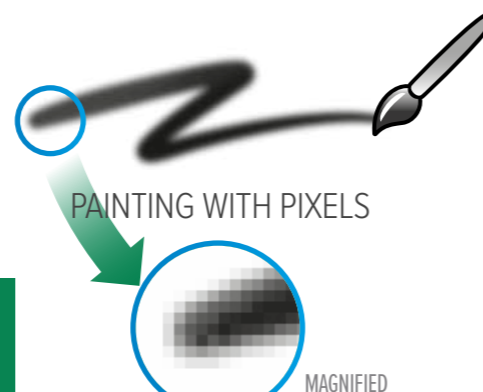
TYPICAL FILE FORMATS:
.AI, .CDR, PDF*, .EPS*

NOTE: .EPS AND .PDF FILES CAN BE BOTH VECTOR OR BITMAP DEPENDING ON WHERE AND HOW THE IMAGE WAS CREATED.

Vector = fonts/logos and graphics

The most common programs used to design vector graphics are Adobe Illustrator and Corel Draw. Most designers when designing your logos and graphics for printing will use a line vector program especially if fonts and shapes are involved. The great thing with vector files is they can be scaled to any size without losing sharpness.

There are only two ways images can be created.



RASTER

TYPICAL FILE FORMATS:
.JPEG/.JPG, .TIFF, .PSD, .BMP, .PNG, .GIF

Raster (bitmap) = photographs

A Raster (or Bitmap) image is made up of tiny square dots (pixel) of colour when grouped together form a rastered image. Raster Images are the most common images found on your computer and on the web. The resolution (measurement of pixels) is kept as low as possible for viewing on a computer screen or device.

FONT OPTIONS:

0123456789
Font: Impact

0123456789
Font: Princetown

0123456789
Font: Prem League

5

CREATIVE STYLE OPTIONS AVAILABLE

PIN LINE
OUTLINE
SOLID

MIN. 3mm
MIN. 3mm

Aussie Pacific garment designers have taken into account the many different methods of decorating or monogramming apparel. Here we look at the three main methods of decoration yet there are others such as Digitally Printed transfers and Screen Printed transfers.

Screen-printing

We thought it would be helpful to indicate what happens each time a job is printed.

The first step is artwork. Once the artwork is finalised, it gets sent for processing. You need to confirm the specific print locations you have instructed to print. After the art has been approved, then film is output to make the screens.

The first step in the screen department is to coat the screens with a photosensitive emulsion. Each colour in a design needs a screen and each screen must be blocked, taped, setup, and squeegeed.

Just imagine if we had to do this each time a t-shirt was ordered. You can see why screen printing was designed to print quality in bulk. For larger runs with more colours, an automatic machine with 10-18 heads is more practical. By "flashing" or drying the ink between each colour layer, a bright, professional quality print, with years of wear and tear is achievable.

Machine Embroidery

A term that describes a specially designed, computerised, embroidery or sewing-embroidery machine to automatically create a design from a pre-made pattern that is input into the machine.

Design Files or 'Masters' are typically downloaded to a computer and then transferred to an embroidery machine which can then be used to stitch out the embroidery designs.

Sublimation

The basic dye sublimation process uses special heat-sensitive dyes to print graphics and text onto special transfer paper. The paper is then placed on a 100% polyester item and both are placed into a heat press. When the heating cycle is completed, the image on the paper has been transferred to the item and has actually reformed into or underneath the coated surface.

Sublimation is always done on a polyester, polymer, or polymer-coated item. At high temperatures, the solid dye converts into a gas without ever becoming a liquid. The same high temperature opens the pores of the polymer and allows the gas to enter. When the temperature drops, the pores close and the gas reverts to a solid state. It has now become a part of the polymer. This is why dye sublimation can't be

done on natural materials, such as 100% cotton. Natural fibres and non-coated materials have no "pores" to open. A dye impregnates colour into (not on to) a material and this colour change is permanent. Sublimation refers to changes from the solid, to the gaseous state without becoming liquid. A polymer consists of large molecules made up of a linked series of repeated simple molecules. Dye sublimation refers to solid dye particles that are changed into gas using heat and pressure, which then bond with any polymers present and change back into a solid. This means the composition of the polymer has changed, and no fading, cracking or peeling should occur because the colour is now part of the fabric.

The fluid stored in the inkjet cartridge is the carrier of the dye. The carrier stays on the paper and only the dye migrates from the paper to the substrate. The dye has little or no colour until heated, so what you see on the paper usually looks nothing like the final transferred image. Dark materials cannot be used with the sublimation process on made up garments.

It is important to remember that this is not ink sitting on top of the fabric, but rather dye that penetrates the fibre of the fabric. The dye particles are designed to bond with polyester, and ignore everything else.



PMS Colour guide

We dye our fabrics to best match the international colour pallet referred to as PMS. The Pantone® Matching System (PMS) is a standardised colour matching system that utilises the Pantone® numbering system for identifying colours in both textile dyes and inks.

By standardising these colours, different manufacturers in different locations or even countries can all reference a Pantone® numbered colour, making sure colours match.

The most commonly referenced colours are in the Pantone® solids palette.

The Pantone® Solid palette consists of 1,114 colours, identified by three or four digit numbers, followed by a C, U, or M suffix.

Originally designed for the graphics industry, the Pantone® solids palette is now used by a wide range of industries, and is the most commonly used palette.

For example, Pantone 199 Red can be identified as Pantone 199C (C= Coated Paper), Pantone 199U (U= Uncoated Paper) or Pantone 199M (M=Matte Paper).

So, when you say Red you could mean any number of shades.

Every good Screen Print Company uses an ink mixing system that corresponds with the Pantone® Matching System (PMS).

Despite the exact nature of Pantone® colours, what you see is not always what you get when

screen printing on textiles and PMS 'Fan' Books come in coated and uncoated versions.

Textiles do not come in coated and uncoated versions so C (or coated colours) are the best match for screen printing. Standard plastisol screen print ink has little shine by nature and more closely resembles the look of the coated PMS Colours.

Screen printing on dark garments requires an underbase so the true colour of the ink can be seen vibrantly because without an underbase the ink colours are absorbed by the garment.

An underbase is a layer of white ink before the design colours are printed and some lighter garments can be printed with no underbase depending on the colour of the garment and the ink colour.

BLACK	PMS 425C	PMS 425C	PMS 424C	PMS COOL GREY 6C	PMS COOL GREY 2C
BLACK	SLATE	CHARCOAL	ASHE	SILVER	LIGHT GREY
PMS 296C	PMS 2945C	PMS 662C	PMS 639C	PMS 278C	PMS 7457C
NAVY	ELECTRIC ROYAL	ROYAL	PACIFIC BLUE	SKY	LIGHT BLUE
PMS 269C	PMS 269C	PMS 518C	PMS 7428C	PMS 476C	PMS 5743C
PURPLE	ELECTRIC PURPLE	BURGUNDY	MAROON	CHOCOLATE	ARMY GREEN
PMS 187C	PMS 215C	PMS 173C	PMS 172C	PMS 171C	
RED	HOT PINK	ORANGE (COTTON BACK)	ORANGE	FLURO ORANGE	
ORANGE	PMS 1505C	PMS 130C	PMS 116C	YELLOW	
HI VIZ ORANGE	ELECTRIC ORANGE	GOLD	CANARY YELLOW	HI VIZ YELLOW	
PMS 7474C	PMS 363C	PMS 360C	PMS 375C	PMS 560C	
TEAL	KAWA GREEN	APPLE GREEN	FLURO GREEN	BOTTLE	

Neon Range

PMS 1787C	PMS 1645C	PMS 375C	PMS 389C
NEON PINK	NEON ORANGE	NEON GREEN	NEON YELLOW
PMS 214C	PMS CYAN C	PMS 3405C	PMS 675C
FUSHCIA	CYAN	KELLY GREEN	PINK

Winter Colours

BLACK	PMS COOL GREY 10C	PMS COOL GREY 5C	PMS 296C	PMS 7428C	PMS 200C
BLACK	CHARCOAL MARLE	GREY MARLE	NAVY FLEECE	MAROON	RED
PMS 2945C	PMS 286C	PMS CYAN C	PMS 425C	PMS 269C	PMS 173C
ELECTRIC ROYAL	ROYAL	CYAN	SLATE	ELECTRIC PURPLE	ORANGE
PMS 1505C	PMS 363C	PMS 368C	PMS 5743C		
ELECTRIC ORANGE	KAWA GREEN	GREEN	ARMY GREEN		

DISCLAIMER: PMS Colours are a guide only and while we make every effort to ensure consistency of our colours, catalogue reproduction is not always 100%. To be certain, ask you distributor to source a sample for you. Dye lots can vary slightly from batch to batch (very rare however) despite our best quality control.



aussiepacific.com.au // aussiepacific.co.nz